



Auburn

Enlarged City School District

2020-21

Budget Statement



Contents:

2020-21 Budget Newsletter Information

Program & Component Budget (pg. 1)

Budget Fact Sheet (pg. 2-3)

Property Tax Report Card (pg. 4)

NYS District Report Card (pg. 5-55)

Fiscal Accountability Summary (pg. 56-63)

Salary Disclosure Notice (pg. 64)

Cayuga County Real Property Exemptions (pg. 65-66)

**Auburn Enlarged City School District
2020-2021
Proposed Budget Expenditures**

Program Component: 75.21% of Budget

The Program component provides funding for the instruction of and educational support services of district students, including regular, special, and occupational education, guidance and health services, and cocurricular and interscholastic activities. Also included are the costs of transporting students to and from the five elementary, one junior high, and one high school

Program	2019-2020	2020-2021	Increase/Decrease
Legal	12,500	12,500	0
Teaching - Regular School	19,874,975	20,247,538	372,561
Programs - Students with Disabilities	12,132,676	12,636,488	503,812
Occupational Education	2,039,998	2,245,125	205,127
Teaching - Special Schools	310,500	321,500	11,000
School Library & Audiovisual	812,902	817,283	4,381
Computer Assisted Instruction	1,997,083	2,290,004	292,921
Guidance	724,513	771,255	46,742
Health Services	673,131	694,694	21,563
Co-Curricular Activities	188,914	193,802	4,888
Interscholastic Activities	588,936	600,951	12,013
District Transportation	198,930	212,332	13,402
Contract Transportation	2,574,932	2,516,023	(58,909)
Public Transportation	50	50	0
BOCES Contract Transportation	50,500	44,500	(6,000)
Employee Benefits	18,026,117	17,091,351	(934,766)
Interfund Transfers	15,000	17,500	2,500
Total Program Expense	\$80,221,559	\$80,712,694	491,135

Capital Component: 14.43% of Budget

The Capital component provides funding for the operation and maintenance of the district's buildings and grounds, as well as for the costs of natural gas and electricity, water, sewer, and telephone services. Also included is funding for debt service - principal and interest payments on capital projects, installment purchases, leases, and interfund transfers.

Capital	2019-2020	2020-2021	Increase/Decrease
Operation	3,038,438	3,139,857	100,219
Maintenance	1,105,772	1,146,063	40,291
Employee Benefits	1,708,080	1,575,094	(132,986)
Debt Service	4,585,583	5,686,490	1,100,907
Interfund Transfers	100,000	100,000 *	0
Total Capital Expense	\$10,538,883	\$11,647,304	1,108,421

* For Capital Project not to exceed \$100,000

Administrative Component: 10.36% of Budget

The administrative component provides funding for general support and management activities, including central administration and business office operations such as payroll, auditing, tax collection and purchasing, as well as legal and personnel functions. Also included in this component are the costs for administration and supervision at each of the district's schools.

Administrative	2019-2020	2020-2021	Increase/Decrease
Board of Education	19,000	19,100	100
District Clerk	12,000	11,950	(50)
District Meeting	15,200	15,200	0
Central Administration	252,397	264,876	12,479
Business Administration	277,827	276,354	(2,273)
Auditing	43,500	41,000	(2,500)
Treasurer	124,434	128,999	4,565
Tax Collection	29,605	6,950	(22,655)
Purchasing	11,000	11,000	0
Fiscal Agent Fees	10,000	10,000	0
Legal	115,000	160,000	45,000
Personnel	704,751	743,700	38,949
Public Information & Service	15,000	66,115	51,115
Central Storeroom	40,230	41,424	1,194
Central Printing & Mailing	589,250	628,750	39,500
Central Data Processing	520,325	448,000	(72,325)
Unallocated Insurance	222,000	257,000	35,000
Board Membership Dues	28,000	28,000	0
Assessments on School Property	80,000	70,000	(10,000)
BOCES Admin. Charges	809,500	932,500	123,000
Curriculum Development/Supervision	414,832	385,931	(28,701)
Supervision - Reg. School	1,640,509	1,690,953	50,444
Research Planning & Evaluation	164,000	164,000	0
Inservice Training	23,000	40,000	17,000
Programs - Students with Disabilities	331,809	334,225	2,416
Health Services	91,957	94,205	2,248
Employee Benefits	1,585,323	1,495,129	(89,194)
Total Administrative Expense	\$8,170,049	\$8,365,361	195,312

Total Budgeted Expenses	\$76,930,661	\$80,725,659	\$1,794,998
--------------------------------	---------------------	---------------------	--------------------

Auburn

Enlarged City School District 2020 - 2021 BUDGET



DATE: TUESDAY, June 9, 2020
ABSENTEE BALLOT ONLY

PLEASE VOTE

- The school budget vote and board election will be held by absentee ballot this year. There will be no in-person voting. Absentee ballots must be received in the Office of the District Clerk by 5:00 p.m. on June 9, 2020.
- In order to vote: you do not need to be a registered voter; you must be a citizen of the United States, at least 18 years old and a resident of the district for at least 30 days prior to June 9th.
- Absentee ballots will be mailed to each registered voter in the district.
- Additional absentee ballots may be requested by any qualified voters in the district by contacting the District Clerk, Shelly Major, by email at MichelleMajor@aecsd.education or by calling her at (315) 255-8850.

2020-21 Budget is \$80,725,559

- Budget is up 2.3% (or \$1.8 million) from 2019-2020
- No Increase in NYS Foundation Aid
- Use of \$1,047,897 of Reserves in this Budget

Staffing Changes in this Budget (Net Reduction = 21 Positions)

- Reductions:
 - 2 General Education Teachers – Elementary
 - 2 Special Education Teachers – Elementary
 - 1 Speech Therapist
 - 1 Administrator (Director of Curriculum & Professional Development)
 - 1 Building Maintenance Mechanic
 - 1 Custodian
 - 1 Network Administrator
 - 25 Teacher Aides
- Additions:
 - 7 Special Education Teachers
 - 6 Teaching Assistants

Educational Programs

- With this budget, we are able to maintain programs that our community values:
 - Six Instructional Teams at Auburn Junior High
 - *Project Lead the Way* Engineering and Biomedical Programs at Auburn High
 - *Project Lead the Way* Gateway at Auburn Junior High
 - Technology Instruction at the Elementary level
 - AP and Cayuga Advantage Courses at Auburn High
 - All Extracurricular Sports and Music Programs District-Wide
 - *Project Lead the Way*/AP Computer Science at Auburn High
 - Computer Literacy Instruction at Auburn Junior High
 - Expanded Reading Instruction and Support in all elementary schools

Tax levy increase of 1.67%

- Average Increase in Taxes, from last year, on a \$100,000 home:
 - No Star Exemption - \$31/year (or \$2.58/month)
 - Basic Star Exemption - \$32/year (or \$2.67/month)
 - Enhanced Star Exemption - \$31/year (or \$2.58/month)



Frequently Asked Questions

What is the "Tax Levy Limit" and why are taxes going up by less than 2%?

- NYS adopted a tax levy limit commonly referred to as "the 2% tax cap". Each district must calculate their individual tax levy limit by using a formula defined by NYS. Auburn's tax levy limit for 2020-21 is 1.67%.

Is the District exceeding the tax cap?

- No; the proposed budget includes a 1.67% tax levy increase, which is within the tax cap limit set by New York State, thus not requiring a super majority for approval.

What happens if we go to a Contingency Budget?

- NYS has not issued guidance on a re-vote if the proposed budget is voted down. In prior years, the Board of Education would decide whether to have a second vote on the same budget or a revised budget. If defeated a second time, NYS requires that the district adopt a Contingency Budget. If that happens, the proposed budget would be reduced by eliminating all unaided equipment expenditures (for example: plows, trucks, lawnmowers, athletic equipment, office computers), and fees for community use of buildings would be implemented. Additionally, there can be no increase in the district's tax levy from the prior year. That means \$533,000 in property tax revenue would have to be cut from the budget, as well as \$290,000 in non-aided equipment purchases.

Key Statistics

The Auburn Enlarged City School District does its best to ensure that it provides high-quality curriculum and instruction that meets the unique needs of each student while not overspending. The comparison below illustrates that:

	<u>Auburn</u>	<u>Similar Schools</u>	<u>NYS Average</u>
Total Expenditures per Pupil (per 2018-19 NYS Fiscal Accountability Summary)	\$17,746	\$22,630	\$25,853

Visit the NYS Property Tax Report Card at <https://data.nysed.gov>

District Enrollment (2019-20) 4,119

Students Receiving Free or
Reduced-Price Meals (2019-20) 54%

Number of Employees
(General Fund budget only)

	<u>2020-21</u>	
Faculty	340.45	61.4%
Support staff	192.30	34.6%
Admin/Supervisors	22.25	4.0%
Total	555.00	



 **Vote** Tuesday, June 9, 2020

2020-21 Property Tax Report Card

050100 - Auburn Enlarged City School District
 Contact Person: Lisa Green
 Telephone Number: 315-255-8808

	Budget 2019-20	Budget 2020-21
	A	B
Total Budgeted Amount, not including Separate Propositions	70,500,551	80,725,559
A. Proposed Tax Levy to Support the Total Budgeted Amount	31,973,596	32,505,722
B. Tax Levy to Support Library Debt, if Applicable		
C. Tax Levy for Non-Excludable Propositions, if Applicable		
D. Total Tax Cap Reserve Amount Used to Reduce Current Year Levy, if Applicable		
E. Total Proposed School Year Tax Levy (A + B + C - D)	31,973,596	32,505,722
F. Permissible Exclusions to the School Tax Levy Limit	877,358	885,071
G. School Tax Levy Limit Excluding Levy for Permissible Exclusions	31,096,238	31,641,651
H. Total Proposed School Year Tax Levy, Excluding Levy to Support Library Debt and/or Permissible Exclusions (E - F + G)	31,096,238	31,641,651
I. Difference: (G - H). (negative value requires 60.0% voter approval)	0	0
Public School Enrollment	4,052	4,119
Consumer Price Index		1.81%

Adjusted Restricted Fund Balance	6,290,407	5,257,932
Assigned Appropriated Fund Balance	2,015,000	1,947,887
Adjusted Unrestricted Fund Balance	3,157,222	3,279,022
Adjusted Unrestricted Fund Balance as a Percent of the Total Budget	4.05%	4.05%

Schedule of Reserve Funds

Reserve Fund	Reserve Fund Description	Reserve Fund Balance	Reserve Fund Purpose
Capital	2018 Capital Reserve Fund	700,000	To pay the cost of any object or purpose for which bonds may be issued.
Capital	2018 Turf Capital Reserve Fund	250,000	To pay the cost of replacing the athletic field turf, for which bonds may be issued.
Unemployment Insurance	Unemployment Insurance Reserve	151,300	To pay the cost of reimbursement to the State Unemployment Insurance Fund.
Insurance	Insurance Reserve Fund	457,570	To pay liability, casualty, and other types of uninsured losses.
Liability	Liability Reserve Fund	498,142	To establish and maintain a program of reserves to cover liability claims incurred.
Tax Contingent	Tax Contingent Reserve	1,950,075	To establish a reserve fund for tax contingent settlements.
Employee Benefit Accrued Liability Reserve (EBALR) Fund	Employee Benefit Accrued Liability Reserve (EBALR) Fund	284,776	For the payment of accrued employee benefits due to employees upon termination of service.
Retirement Contribution Reserve Sub-Fund (TRC)	Retirement Contribution Reserve Sub-Fund (TRC)	554,000	To fund employer retirement contributions to the State and Local Teachers' Retirement System.
Retirement Contribution Reserve Fund	Retirement Contribution Reserve Fund	1,494,353	To fund employer retirement contributions to the State and Local Employees' Retirement System.

AUBURN CITY SCHOOL DISTRICT - NEW YORK STATE REPORT CARD [2018 - 19]

The New York State Report Card is an important part of the Board of Regents' effort to create educational equity and raise learning standards for all students. Knowledge gained from the report card on a school's or district's strengths and weaknesses can be used to improve instruction and services to students. The report card provides information to the public on school/district staff, students, and measures of school and district performance as required by the Every Student Succeeds Act (ESSA). Fundamentally, ESSA is about creating a set of interlocking strategies to promote educational equity by providing support to districts and schools as they work to ensure that every student succeeds. New York State is committed to ensuring that all students succeed and thrive in school no matter who they are, where they live, where they go to school, or where they come from.

2019-20 ACCOUNTABILITY STATUS BASED ON 2018-19 DATA

TARGET DISTRICT

MADE PROGRESS

NO

SECTION 1003 SCHOOL IMPROVEMENT FUNDS (2018-19)

The link below provides a list of all Local Education Agencies and public schools that received section 1003 school improvement funds, including the amount of funds each school received and the types of strategies implemented in each school with such funds.

Section 1003 School Improvement Funds Data (54.71 kilobytes)

For information on the use of Title I School Improvement funds, see:

- 2017-18 Title I SIG 1003 Basic Application and Addendum for 2018-19 Extension
- 2018-19 Title I SIG 1003 Basic Planning
- 2019 NYSIP-PLC Phase II
- SIG Cohort 5, 6 and 7 Schools Funded with SIGA in 2018-19

ELEMENTARY/MIDDLE STATUSES BY SUBGROUP

Subgroup	Status	Made Progress
All Students	Comprehensive Support and Improvement	NA
Asian or Native Hawaiian/Other Pacific Islander	Good Standing	NA
Black or African American	Targeted Support and Improvement	NA
Hispanic or Latino	Targeted Support and Improvement	NA
Multiracial	Targeted Support and Improvement	NA
White	Good Standing: Potential Target District for 2020-21	NA
Students with Disabilities	Targeted Support and Improvement	NA
Economically Disadvantaged	Targeted Support and Improvement	NA

ELEMENTARY/MIDDLE INDICATOR LEVELS

Subgroup	Composite Performance	Growth	Composite Performance & Growth Combined	English Language Proficiency (ELP)	Progress	Chronic Absenteeism
All Students	2	2	2	—	2	1
American Indian or Alaska Native	—	—	—	—	—	—
Asian or Native Hawaiian/Other Pacific Islander	4	4	4	—	—	4
Black or African American	1	2	1	—	2	1
Hispanic or Latino	2	2	2	—	1	1
Multiracial	2	2	2	—	2	2
White	2	2	2	—	2	1
English Language Learners	—	—	—	—	—	—
Students with Disabilities	2	2	2	—	2	1
Economically Disadvantaged	1	2	1	—	2	1

ELEMENTARY/MIDDLE COMPOSITE PERFORMANCE

Subgroup	Level
All Students	2
Asian or Native Hawaiian/Other Pacific Islander	4
Black or African American	1
Hispanic or Latino	2
Multiracial	2
White	2
English Language Learners	—
Students with Disabilities	2
Economically Disadvantaged	1

ELEMENTARY/MIDDLE CORE SUBJECT PERFORMANCE

Subgroup	Subject	Cohort	Index	Level
All Students	ELA	1,433	93	2
	Math	1,345	111	
	Science	458	198	
	Combined	3,236	115	
Asian or Native Hawaiian/Other Pacific Islander	ELA	26	152	4
	Math	26	206	
	Science	7	229	
	Combined	59	185	
Black or African American	ELA	80	62	1
	Math	72	83	
	Science	52	144	
	Combined	204	90	
Hispanic or Latino	ELA	79	68	2
	Math	73	86	
	Science	39	186	
	Combined	191	99	
Multiracial	ELA	151	80	2
	Math	145	95	
	Science	43	184	
	Combined	339	99	
White	ELA	1,108	98	2
	Math	1,040	115	
	Science	366	204	
	Combined	2,514	120	
English Language Learners	ELA	8	100	-
	Math	8	150	
	Science	3	-	
	Combined	19	-	
Students with Disabilities	ELA	245	48	2
	Math	232	53	
	Science	66	153	
	Combined	543	63	
Economically Disadvantaged	ELA	890	74	1
	Math	825	87	
	Science	260	181	
	Combined	1,975	93	

ELEMENTARY/MIDDLE WEIGHTED AVERAGE PERFORMANCE

Subgroup	Subject	Cohort	Index	Level
All Students	ELA	1,824	73	2
	Math	1,818	82	
	Science	573	159	
	Combined	4,215	88	
Asian or Native Hawaiian/Other Pacific Islander	ELA	29	136	4
	Math	29	185	
	Science	8	200	
	Combined	66	165	
Black or African American	ELA	102	49	1
	Math	101	59	
	Science	71	106	
	Combined	274	67	
Hispanic or Latino	ELA	95	57	2
	Math	94	67	
	Science	48	151	
	Combined	237	80	
Multiracial	ELA	187	64	2
	Math	187	74	
	Science	57	139	
	Combined	431	78	
White	ELA	1,424	76	2
	Math	1,420	84	
	Science	451	165	
	Combined	3,295	92	
English Language Learners	ELA	10	80	-
	Math	10	120	
	Science	5	140	
	Combined	25	-	
Students with Disabilities	ELA	309	38	2
	Math	306	40	
	Science	93	109	
	Combined	708	48	
Economically Disadvantaged	ELA	1,075	61	2
	Math	1,071	67	
	Science	339	139	
	Combined	2,485	74	

ELEMENTARY/MIDDLE GROWTH (2016-17, 2017-18, AND 2018-19)

Subgroup	Sum Of SGPs	Number Of SGPs	Index	Level
All Students	230,772	4,815	47.9	2
American Indian or Alaska Native	—	4	—	—
Asian or Native Hawaiian/Other Pacific Islander	3,723	64	58.2	4
Black or African American	14,007	292	48	2
Hispanic or Latino	13,494	277	48.7	2
Multiracial	23,016	464	49.6	2
White	176,353	3,714	47.5	2
English Language Learners	—	19	—	—
Students with Disabilities	35,040	702	49.9	2
Economically Disadvantaged	139,554	2,956	47.2	2

ELEMENTARY/MIDDLE COMPOSITE PERFORMANCE AND GROWTH COMBINED

Subgroup	Level
All Students	2
Asian or Native Hawaiian/Other Pacific Islander	4
Black or African American	1
Hispanic or Latino	2
Multiracial	2
White	2
Students with Disabilities	2
Economically Disadvantaged	1

ELEMENTARY/MIDDLE ELP

Subgroup	Number Of ELLs	Benchmark	Progress Rate	Success Ratio	Level
All Students	4	—	—	—	—
American Indian or Alaska Native	0	—	—	—	—
Asian or Native Hawaiian/Other Pacific Islander	0	—	—	—	—
Black or African American	0	—	—	—	—
Hispanic or Latino	2	—	—	—	—
Multiracial	1	—	—	—	—
White	1	—	—	—	—
English Language Learners	4	—	—	—	—
Students with Disabilities	0	—	—	—	—
Economically Disadvantaged	3	—	—	—	—

ELEMENTARY/MIDDLE PROGRESS

Subgroup	Subject	Baseline	Cohort	Index	District MIP	State MIP	Long-Term Goal	Exceed Long-Term Goal	Met SH Target	Met AG Target	End Goal	Level	Average Of Levels
All Students	ELA	51	1,824	73	63	105	122	161	—	N	200	2	2
	Math	61	1,818	82	72	107	124	162	—	N	200	2	
Asian or Native Hawaiian/Other Pacific Islander	ELA	—	29	—	—	—	—	—	—	—	—	—	—
	Math	—	29	—	—	—	—	—	—	—	—	—	
Black or African American	ELA	28	102	49	42	98	116	158	—	N	200	2	2
	Math	29	101	59	43	88	107	154	—	N	200	2	
Hispanic or Latino	ELA	38	95	57	51	95	113	157	—	N	200	2	1
	Math	57	94	67	68	92	111	155	N	—	200	1	
Multiracial	ELA	39	187	64	52	102	119	159	—	N	200	2	2
	Math	46	187	74	59	104	120	160	—	Y	200	3	
White	ELA	53	1,424	76	65	102	119	160	—	N	200	2	2
	Math	64	1,420	84	75	110	126	163	—	N	200	2	
English Language Learners	ELA	—	10	—	—	—	—	—	—	—	—	—	—
	Math	—	10	—	—	—	—	—	—	—	—	—	
Students with Disabilities	ELA	21	309	38	35	61	85	142	—	N	200	2	2
	Math	27	306	40	41	61	85	142	Y	—	200	2	
Economically Disadvantaged	ELA	40	1,075	61	53	95	113	157	—	N	200	2	2
	Math	48	1,071	67	60	94	112	156	—	N	200	2	

ELEMENTARY/MIDDLE CHRONIC ABSENTEEISM

Subgroup	Baseline	Students Enrolled	Students Chronically Absent	Chronic Absenteeism Rate	District MIP	State MIP	Long-Term Goal	Exceed Long-Term Goal	Met SH Target	Met AG Target	End Goal	Level
All Students	17.9	2,689	490	18.2%	16.9%	14.6%	12.8%	8.9%	N	—	5%	1
American Indian or Alaska Native	—	5	—	—	—	—	—	—	—	—	—	—
Asian or Native Hawaiian/Other Pacific Islander	12.5	39	2	5.1%	12.2%	8.2%	7.4%	6.2%	—	—	5%	4
Black or African American	28.1	144	43	29.9%	26.3%	20.1%	17.7%	11.4%	N	—	5%	1
Hispanic or Latino	17.6	152	35	23%	16.6%	19.8%	17%	11%	N	—	5%	1
Multiracial	23.5	304	71	23.4%	22.1%	16.5%	14.5%	9.8%	Y	—	5%	2
White	16.5	2,067	338	16.4%	15.9%	10.5%	9.3%	7.2%	N	—	5%	1
English Language Learners	—	23	—	—	—	—	—	—	—	—	—	—
Students with Disabilities	25.2	455	117	25.7%	23.6%	21.5%	18.5%	11.8%	N	—	5%	1
Economically Disadvantaged	23.9	1,621	416	25.7%	22.3%	19.9%	17.1%	11.1%	N	—	5%	1

ELEMENTARY/MIDDLE ELA PARTICIPATION RATE

Subgroup	Tested 95% In Current Year Or 2 Years Combined	Current Year Enrollment	Current Year Participation Rate	Current Year + Previous Year Enrollment	Current Year + Previous Year Participation Rate
All Students	X	1,966	74.6%	3,880	71%
American Indian or Alaska Native	--	1	--	--	--
Asian or Native Hawaiian/Other Pacific Islander	--	17	--	--	--
Black or African American	X	110	75.5%	223	74.9%
Hispanic or Latino	X	104	78.9%	205	77.6%
Multiracial	X	201	76.6%	394	71.1%
White	X	1,533	73.8%	3,022	70.1%
English Language Learners	--	6	--	--	--
Students with Disabilities	X	306	74.5%	593	70.3%
Economically Disadvantaged	X	1,171	78.6%	2,263	74.8%

ELEMENTARY/MIDDLE MATHEMATICS PARTICIPATION RATE

Subgroup	Tested 95% In Current Year Or 2 Years Combined	Current Year Enrollment	Current Year Participation Rate	Current Year + Previous Year Enrollment	Current Year + Previous Year Participation Rate
All Students	X	1,964	70.2%	3,871	67.9%
American Indian or Alaska Native	--	0	--	--	--
Asian or Native Hawaiian/Other Pacific Islander	--	17	--	--	--
Black or African American	X	110	69.1%	224	69.2%
Hispanic or Latino	X	106	75.5%	207	73.4%
Multiracial	X	201	73.6%	393	70%
White	X	1,530	69.2%	3,012	66.9%
English Language Learners	--	6	--	--	--
Students with Disabilities	X	303	71%	589	67.6%
Economically Disadvantaged	X	1,169	73%	2,253	70.5%

SECONDARY STATUSES BY SUBGROUP

Subgroup	Status	Made Progress
All Students	Good Standing	NA
Black or African American	Good Standing: Potential Target District for 2020-21.	NA
Hispanic or Latino	Good Standing	NA
Multiracial	Good Standing	NA
White	Good Standing	NA
Students with Disabilities	Good Standing: Potential Target District for 2020-21.	NA
Economically Disadvantaged	Good Standing: Potential Target District for 2020-21.	NA

SECONDARY INDICATOR LEVELS

Subgroup	Composite Performance	Graduation Rate	Composite Performance & Graduation Rate Combined	English Language Proficiency (ELP)	Progress	Chronic Absenteeism	College, Career, & Civic Readiness (CCCR)
All Students	2	2	2	—	1	2	3
American Indian or Alaska Native	—	—	—	—	—	—	—
Asian or Native Hawaiian/Other Pacific Islander	—	—	—	—	—	—	—
Black or African American	1	2	1	—	1	2	4
Hispanic or Latino	2	2	2	—	—	1	—
Multiracial	1	3	2	—	—	2	—
White	2	2	2	—	1	2	2
English Language Learners	—	—	—	—	—	—	—
Students with Disabilities	1	2	1	—	1	1	1
Economically Disadvantaged	1	2	1	—	1	2	2

SECONDARY COMPOSITE PERFORMANCE

Subgroup	Subject	Cohort	Index	Combined Index	Level
All Students	ELA	272	162	168	2
	Math	272	134		
	Science	272	204		
	Social Studies	272	213		
Asian or Native Hawaiian/Other Pacific Islander	ELA	5	210	-	-
	Math	5	170		
	Science	5	250		
	Social Studies	5	240		
Black or African American	ELA	66	126	136	1
	Math	66	102		
	Science	66	174		
	Social Studies	66	194		
Hispanic or Latino	ELA	21	160	151	2
	Math	21	105		
	Science	21	174		
	Social Studies	21	214		
Multiracial	ELA	21	93	112	1
	Math	21	88		
	Science	21	152		
	Social Studies	21	162		
White	ELA	219	169	173	2
	Math	219	140		
	Science	219	208		
	Social Studies	219	216		
Students with Disabilities	ELA	70	67	78	1
	Math	70	41		
	Science	70	124		
	Social Studies	70	128		
Economically Disadvantaged	ELA	118	128	140	1
	Math	118	106		
	Science	118	184		
	Social Studies	118	192		

SECONDARY GRADUATION RATE

Subgroup	Cohort	Baseline	Number In Cohort	Grad Rate	District MIP	State MIP	Long-Term Goal	Exceed Long-Term Goal	Met SH Target	Met AG Target	End Goal	Level By Cohort	Level By Subgroup
All Students	4-Year	71.5%	311	77.5%	73.3%	82.8%	85%	90%	-	N	95%	2	2
	5-Year	78.8%	350	82%	80.2%	85%	86.8%	91.4%	-	Y	96%	3	
	6-Year	77.8%	359	74.4%	79.4%	85.1%	87.3%	92.2%	N	-	97%	1	
American Indian or Alaska Native	4-Year	-	3	-	-	-	-	-	-	-	-	-	-
	5-Year	-	4	-	-	-	-	-	-	-	-	-	
	6-Year	-	4	-	-	-	-	-	-	-	-	-	
Asian or Native Hawaiian/Other Pacific Islander	4-Year	-	8	-	-	-	-	-	-	-	-	-	-
	5-Year	-	7	-	-	-	-	-	-	-	-	-	
	6-Year	-	10	-	-	-	-	-	-	-	-	-	
Black or African American	4-Year	61.5%	40	62.5%	64.1%	73.3%	77.3%	86.2%	N	-	95%	1	2
	5-Year	78.8%	41	78%	80.2%	76.7%	80.3%	88.2%	-	Y	96%	3	
	6-Year	72.5%	39	64.1%	74.5%	76.9%	80.3%	88.7%	N	-	97%	1	
Hispanic or Latino	4-Year	36.8%	25	76%	41.4%	73.2%	76.8%	85.9%	-	-	95%	3	2
	5-Year	65.2%	19	52.6%	67.6%	75.7%	79.1%	87.6%	Y	-	96%	2	
	6-Year	52.4%	19	47.4%	56%	76.1%	79.7%	88.4%	N	-	97%	1	
Multiracial	4-Year	50%	18	66.7%	51.8%	83.7%	85.7%	90.4%	-	Y	95%	3	3
	5-Year	-	-	-	-	-	-	-	-	-	-	-	
	6-Year	-	-	-	-	-	-	-	-	-	-	-	
White	4-Year	75.7%	246	80.5%	77.3%	90.2%	91%	93%	-	N	95%	2	2
	5-Year	79.7%	280	82.9%	81.1%	91.5%	92.3%	94.2%	-	Y	96%	3	
	6-Year	79.6%	300	78.7%	81%	91.2%	92.4%	94.7%	N	-	97%	1	
English Language Learners	4-Year	-	2	-	-	-	-	-	-	-	-	-	-
	5-Year	-	1	-	-	-	-	-	-	-	-	-	
	6-Year	-	0	-	-	-	-	-	-	-	-	-	
Students with Disabilities	4-Year	31.3%	47	57.4%	36.3%	59.7%	66.1%	80.6%	-	Y	95%	3	2
	5-Year	34.8%	44	50%	39.6%	63%	69%	82.5%	-	Y	96%	3	
	6-Year	29.1%	42	33.3%	34.5%	61.4%	67.8%	82.4%	N	-	97%	1	
Economically Disadvantaged	4-Year	49.7%	137	65%	53.3%	76.9%	79.9%	87.5%	-	N	95%	2	2
	5-Year	61.9%	145	77.2%	64.7%	80.4%	83%	89.5%	-	Y	96%	3	
	6-Year	60.4%	161	54.7%	63.4%	80.7%	83.5%	90.3%	N	-	97%	1	

SECONDARY COMPOSITE PERFORMANCE & GRADUATION RATE COMBINED

Subgroup	Level
All Students	2
Black or African American	1
Hispanic or Latino	2
Multiracial	2
White	2
Students with Disabilities	1
Economically Disadvantaged	1

SECONDARY PROGRESS

Subgroup	Subject	Baseline	Cohort	Index	District MIP	State MIP	Long-Term Goal	Exceed Long-Term Goal	Met SH Target	Met AG Target	End Goal	Level	Average Of Levels
All Students	ELA	185	272	162	187	191	194	204	N	—	215	1	1
	Math	142	272	134	146	151	158	179	Y	—	200	2	
Asian or Native Hawaiian/Other Pacific Islander	ELA	—	5	—	—	—	—	—	—	—	—	—	—
	Math	—	5	—	—	—	—	—	—	—	—	—	
Black or African American	ELA	152	66	126	157	163	170	192	N	—	215	1	1
	Math	121	66	102	128	117	127	164	Y	—	200	2	
Hispanic or Latino	ELA	—	21	—	—	—	—	—	—	—	—	—	—
	Math	—	21	—	—	—	—	—	—	—	—	—	
Multiracial	ELA	—	21	—	—	—	—	—	—	—	—	—	—
	Math	—	21	—	—	—	—	—	—	—	—	—	
White	ELA	192	219	169	194	208	209	212	N	—	215	1	1
	Math	147	219	140	151	168	172	186	Y	—	200	2	
Students with Disabilities	ELA	54	70	67	67	120	133	174	N	—	215	1	1
	Math	42	70	41	55	91	105	153	N	—	200	1	
Economically Disadvantaged	ELA	150	118	128	155	171	177	196	N	—	215	1	1
	Math	116	118	106	123	131	140	170	Y	—	200	2	

SECONDARY CHRONIC ABSENTEEISM

Subgroup	Baseline	Students Enrolled	Students Chronically Absent	Chronic Absenteeism Rate	District MIP	State MIP	Long-Term Goal	Exceed Long-Term Goal	Met SH Target	Met AG Target	End Goal	Level
All Students	31.1	1,231	324	26.3%	29.1%	22.6%	19.8%	12.4%	—	N	5%	2
American Indian or Alaska Native	—	5	—	—	—	—	—	—	—	—	—	—
Asian or Native Hawaiian/Other Pacific Islander	—	18	—	—	—	—	—	—	—	—	—	—
Black or African American	46.3	97	40	41.2%	42.9%	31.5%	27.1%	16.1%	—	N	5%	2
Hispanic or Latino	35.7	52	23	44.2%	33.3%	31.6%	27.2%	16.1%	N	—	5%	1
Multiracial	47.1	102	42	41.2%	43.7%	23.1%	20.1%	12.4%	—	N	5%	2
White	27.9	971	217	22.3%	26.1%	15.6%	14%	9.5%	—	N	5%	2
English Language Learners	—	8	—	—	—	—	—	—	—	—	—	—
Students with Disabilities	43.5	157	64	40.8%	40.5%	32.8%	28%	16.5%	N	—	5%	1
Economically Disadvantaged	45.6	585	226	38.6%	42.4%	30.2%	25.8%	15.4%	—	N	5%	2

SECONDARY CCCR LEVELS

Subgroup	Baseline	Index	District MIP	State MIP	Long-Term Goal	Exceed Long-Term Goal	Met SH Target	Met AG Target	End Goal	Level
All Students	119.9	130.7	124.9	130.2	137.8	156.4	—	—	175	3
Asian or Native Hawaiian/Other Pacific Islander	—	—	—	—	—	—	—	—	—	—
Black or African American	102.4	117.6	108.2	101.2	114	144.5	—	—	175	4
Hispanic or Latino	—	—	—	—	—	—	—	—	—	—
Multiracial	—	—	—	—	—	—	—	—	—	—
White	123.3	136.6	127.5	149.7	154.1	164.6	—	N	175	2
English Language Learners	—	—	—	—	—	—	—	—	—	—
Students with Disabilities	65.5	62.2	74.3	76.5	93.5	134.3	N	—	175	1
Economically Disadvantaged	89.6	103.2	96.4	112.9	123.7	149.4	—	N	175	2

SECONDARY CCCR COUNTS

Subgroup	Cohort Count	Annual Biliteracy	2.0 Weight	1.5 Weight	1.0 Weight	0.5 Weight	0.0 Weight
All Students	322	0	188	1	24	39	70
Asian or Native Hawaiian/Other Pacific Islander	6	0	--	--	--	--	--
Black or African American	37	0	17	0	7	5	8
Hispanic or Latino	27	0	--	--	--	--	--
Multiracial	22	0	--	--	--	--	--
White	254	0	158	1	14	31	50
English Language Learners	4	0	--	--	--	--	--
Students with Disabilities	37	0	6	1	6	7	17
Economically Disadvantaged	154	0	65	1	15	25	48

SECONDARY ELA PARTICIPATION RATE

Subgroup	Tested 95% In Current Year Or 2 Years Combined	Current Year 12th Grade Enrollment	Current Year Participation Rate	Current Year + Previous Year 12th Grade Enrollment	Current Year + Previous Year Participation Rate
All Students	✓	256	99.6%	503	99.2%
American Indian or Alaska Native	--	0	--	--	--
Asian or Native Hawaiian/Other Pacific Islander	--	3	--	--	--
Black or African American	--	31	--	--	--
Hispanic or Latino	--	10	--	--	--
Multiracial	--	9	--	--	--
White	✓	203	99.5%	404	99%
English Language Learners	--	0	--	--	--
Students with Disabilities	--	12	--	--	--
Economically Disadvantaged	✓	96	99%	175	98.3%

SECONDARY MATHEMATICS PARTICIPATION RATE

Subgroup	Tested 95% in Current Year Or 2 Years Combined	Current Year 12th Grade Enrollment	Current Year Participation Rate	Current Year + Previous Year 12th Grade Enrollment	Current Year + Previous Year Participation Rate
All Students	✓	256	100%	503	99.4%
American Indian or Alaska Native	—	0	—	—	—
Asian or Native Hawaiian/Other Pacific Islander	—	3	—	—	—
Black or African American	—	31	—	—	—
Hispanic or Latino	—	10	—	—	—
Multiracial	—	9	—	—	—
White	✓	203	100%	404	99.3%
English Language Learners	—	0	—	—	—
Students with Disabilities	—	12	—	—	—
Economically Disadvantaged	✓	96	100%	176	98.9%

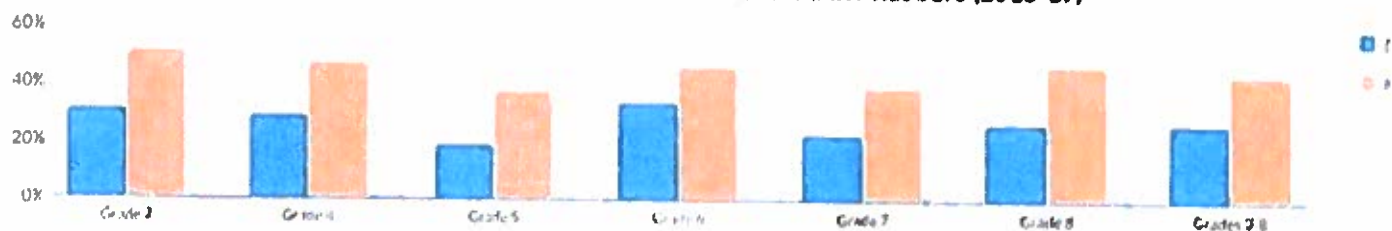
STAFF QUALIFICATIONS (2018-19)

	INEXPERIENCED TEACHERS		INEXPERIENCED PRINCIPALS		TEACHERS TEACHING OUT OF THEIR SUBJECT/FIELD OF CERTIFICATION	
	#	%	#	%	#	%
THIS DISTRICT	34	11%	3	43%	8	3%
STATEWIDE	32,551	16%	1,378	28%	23,318	11%
STATEWIDE HIGH-POVERTY SCHOOLS	11,966	25%	392	32%	10,750	23%
STATEWIDE LOW-POVERTY SCHOOLS	5,751	9%	262	21%	1,180	2%

GRADUATION RATE

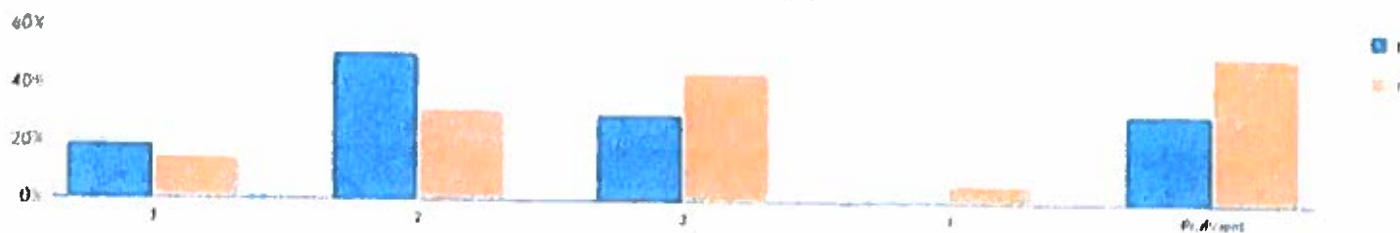
Subgroup	Total	GRAD RATE		REGENTS WITH ADVANCED DESIGNATION		REGENTS DIPLOMA		LOCAL DIPLOMA		NON DIPLOMA CRED		STILL ENROLLED		GED TRANSFER		DROPOUT	
		#	%	#	%	#	%	#	%	#	%	#	%	#	%	#	%
All Students	327	234	72%	109	33%	110	34%	15	5%	9	3%	17	5%	13	4%	54	17%
Female	163	133	82%	67	41%	61	37%	5	3%	2	1%	3	2%	6	4%	19	12%
Male	164	101	62%	42	26%	49	30%	10	6%	7	4%	14	9%	7	4%	35	21%
Multiracial	-	-	-	-	-	-	-	-	-	-	-	-	-	-	-	-	-
American Indian or Alaska Native	0	0	0%	0	0%	0	0%	0	0%	0	0%	0	0%	0	0%	0	0%
Asian or Native Hawaiian/Other Pacific Islander	-	-	-	-	-	-	-	-	-	-	-	-	-	-	-	-	-
White	258	190	74%	102	40%	80	31%	8	3%	8	3%	11	4%	11	4%	38	15%
Black or African American	38	26	68%	2	5%	21	55%	3	8%	0	0%	3	8%	1	3%	8	21%
Hispanic or Latino	14	9	64%	2	14%	4	29%	3	21%	0	0%	1	7%	0	0%	4	29%
General Education Students	293	219	75%	109	37%	106	36%	4	1%	5	2%	14	5%	13	4%	42	14%
Students with Disabilities	34	15	44%	0	0%	4	12%	11	32%	4	12%	3	9%	0	0%	12	35%
Non-English Language Learners	-	-	-	-	-	-	-	-	-	-	-	-	-	-	-	-	-
English Language Learners	-	-	-	-	-	-	-	-	-	-	-	-	-	-	-	-	-
Not Economically Disadvantaged	170	144	85%	85	50%	54	32%	5	3%	2	1%	4	2%	7	4%	13	8%
Economically Disadvantaged	157	90	57%	24	15%	56	36%	10	6%	7	4%	13	8%	6	4%	41	26%
Not Migrant	-	-	-	-	-	-	-	-	-	-	-	-	-	-	-	-	-
Migrant	-	-	-	-	-	-	-	-	-	-	-	-	-	-	-	-	-
Parents not in Armed Forces	-	-	-	-	-	-	-	-	-	-	-	-	-	-	-	-	-
Parents in Armed Forces	-	-	-	-	-	-	-	-	-	-	-	-	-	-	-	-	-
Not Homeless	312	225	72%	108	35%	102	33%	15	5%	9	3%	16	5%	13	4%	49	16%
Homeless	15	9	60%	1	7%	8	53%	0	0%	0	0%	1	7%	0	0%	5	33%
Not in Foster Care	-	-	-	-	-	-	-	-	-	-	-	-	-	-	-	-	-
Foster Care	-	-	-	-	-	-	-	-	-	-	-	-	-	-	-	-	-

GRADES 3-8 ENGLISH LANGUAGE ARTS SUMMARY RESULTS (2018-19)



Grade	Not Tested	Tested	Level 1		Level 2		Level 3		Level 4		Proficient (Levels 3 & 4)	
			#	%	#	%	#	%	#	%	#	%
Grade 3	35	318	60	19%	161	51%	95	30%	2	1%	97	31%
Grade 4	57	260	71	27%	114	44%	63	24%	12	5%	75	29%
Grade 5	63	300	162	54%	82	27%	46	15%	10	3%	56	19%
Grade 6	72	222	86	39%	60	27%	47	21%	29	13%	76	34%
Grade 7	137	201	103	51%	52	26%	37	18%	9	4%	46	23%
Grade 8	163	146	67	46%	40	27%	30	21%	9	6%	39	27%
Grades 3-8	527	1,447	549	38%	509	35%	318	22%	71	5%	389	27%

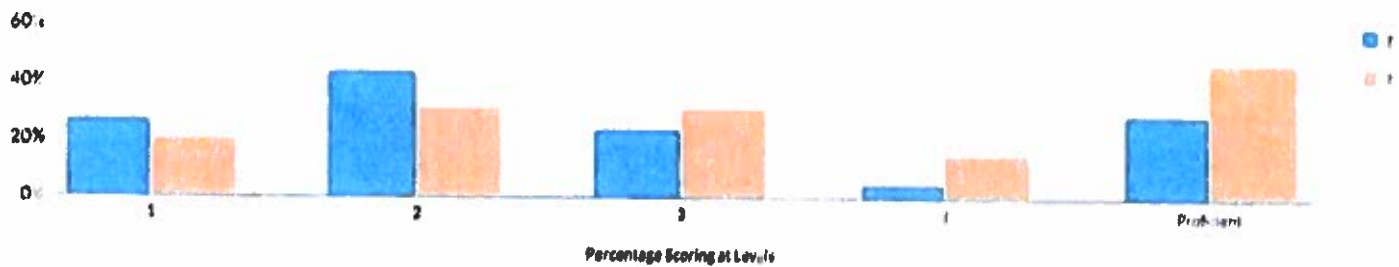
GRADE 3 ELA RESULTS



MEAN SCORE: 592

Subgroup	Not Tested	Tested	Level 1		Level 2		Level 3		Level 4		Proficient (Levels 3 & 4)	
			#	%	#	%	#	%	#	%	#	%
All Students	35	318	60	19%	161	51%	95	30%	2	1%	97	31%
General Education	27	271	42	15%	137	51%	90	33%	2	1%	92	34%
Students with Disabilities	8	47	18	38%	24	51%	5	11%	0	0%	5	11%
Asian or Native Hawaiian/Other Pacific Islander	0	2	-	-	-	-	-	-	-	-	-	-
Black or African American	0	17	8	47%	6	35%	3	18%	0	0%	3	18%
Hispanic or Latino	0	15	-	-	-	-	-	-	-	-	-	-
White	34	242	40	17%	121	50%	79	33%	2	1%	81	33%
Multiracial	1	42	8	19%	25	60%	9	21%	0	0%	9	21%
Small Group Total	0	17	4	24%	9	53%	4	24%	0	0%	4	24%
Female	18	151	21	14%	74	49%	56	37%	0	0%	56	37%
Male	17	167	39	23%	87	52%	39	23%	2	1%	41	25%
English Language Learners	0	1	-	-	-	-	-	-	-	-	-	-
Non-English Language Learners	35	317	-	-	-	-	-	-	-	-	-	-
Economically Disadvantaged	16	206	51	25%	106	51%	49	24%	0	0%	49	24%
Not Economically Disadvantaged	19	112	9	8%	55	49%	46	41%	2	2%	48	43%
Not Migrant	35	318	60	19%	161	51%	95	30%	2	1%	97	31%
Homeless	2	8	3	38%	5	63%	0	0%	0	0%	0	0%
Not Homeless	33	310	57	18%	156	50%	95	31%	2	1%	97	31%
In Foster Care	0	2	-	-	-	-	-	-	-	-	-	-
Not in Foster Care	35	316	-	-	-	-	-	-	-	-	-	-
Parent Not in Armed Forces	35	318	60	19%	161	51%	95	30%	2	1%	97	31%

GRADE 4 ELA RESULTS



MEAN SCORE: 592

Subgroup	Not Tested	Tested	Level 1		Level 2		Level 3		Level 4		Proficient (Levels 3 & 4)	
			#	%	#	%	#	%	#	%	#	%
All Students	57	260	71	27%	114	44%	63	24%	12	5%	75	29%
General Education	41	228	51	22%	104	46%	61	27%	12	5%	73	32%
Students with Disabilities	16	32	20	63%	10	31%	2	6%	0	0%	2	6%
Black or African American	4	13	6	46%	4	31%	3	23%	0	0%	3	23%
Hispanic or Latino	1	15	4	27%	8	53%	3	20%	0	0%	3	20%
White	43	204	55	27%	89	44%	51	25%	9	4%	60	29%
Multiracial	8	28	6	21%	13	46%	6	21%	3	11%	9	32%
Female	28	122	31	25%	48	39%	34	28%	9	7%	43	35%
Male	29	138	40	29%	66	48%	29	21%	3	2%	32	23%
English Language Learners	1	2	-	-	-	-	-	-	-	-	-	-
Non-English Language Learners	56	258	-	-	-	-	-	-	-	-	-	-
Economically Disadvantaged	35	168	60	36%	73	43%	30	18%	5	3%	35	21%
Not Economically Disadvantaged	22	92	11	12%	41	45%	33	36%	7	8%	40	43%
Not Migrant	57	260	71	27%	114	44%	63	24%	12	5%	75	29%
Homeless	1	12	3	25%	6	50%	3	25%	0	0%	3	25%
Not Homeless	56	248	68	27%	108	44%	60	24%	12	5%	72	29%
In Foster Care	0	1	-	-	-	-	-	-	-	-	-	-
Not in Foster Care	57	259	-	-	-	-	-	-	-	-	-	-
Parent Not in Armed Forces	57	260	71	27%	114	44%	63	24%	12	5%	75	29%

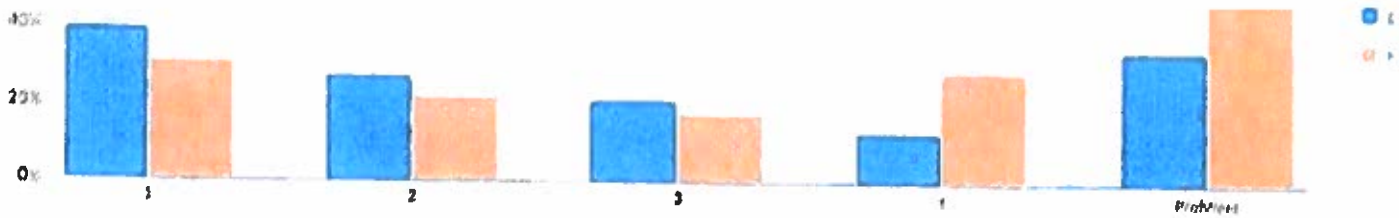
GRADE 5 ELA RESULTS



MEAN SCORE: 591

Subgroup	Not Tested	Tested	Level 1		Level 2		Level 3		Level 4		Proficient (Levels 3 & 4)	
			#	%	#	%	#	%	#	%	#	%
All Students	63	300	162	54%	82	27%	46	15%	10	3%	56	19%
General Education	47	253	120	47%	79	31%	45	18%	9	4%	54	21%
Students with Disabilities	16	47	42	89%	3	6%	1	2%	1	2%	2	4%
Asian or Native Hawaiian/Other Pacific Islander	0	4	—	—	—	—	—	—	—	—	—	—
Black or African American	2	14	—	—	—	—	—	—	—	—	—	—
Hispanic or Latino	2	14	9	64%	4	29%	1	7%	0	0%	1	7%
White	53	237	121	51%	68	29%	38	16%	10	4%	48	20%
Multiracial	6	31	20	65%	5	16%	6	19%	0	0%	6	19%
Small Group Total	2	18	12	67%	5	28%	1	6%	0	0%	1	6%
Female	30	137	66	48%	41	30%	23	17%	7	5%	30	22%
Male	33	163	96	59%	41	25%	23	14%	3	2%	26	16%
Non-English Language Learners	63	300	162	54%	82	27%	46	15%	10	3%	56	19%
Economically Disadvantaged	28	187	121	65%	46	25%	16	9%	4	2%	20	11%
Not Economically Disadvantaged	35	113	41	36%	36	32%	30	27%	6	5%	36	32%
Not Migrant	63	300	162	54%	82	27%	46	15%	10	3%	56	19%
Homeless	3	8	6	75%	2	25%	0	0%	0	0%	0	0%
Not Homeless	60	292	156	53%	80	27%	46	16%	10	3%	56	19%
In Foster Care	0	1	—	—	—	—	—	—	—	—	—	—
Not in Foster Care	63	299	—	—	—	—	—	—	—	—	—	—
Parent Not in Armed Forces	63	300	162	54%	82	27%	46	15%	10	3%	56	19%

GRADE 6 ELA RESULTS

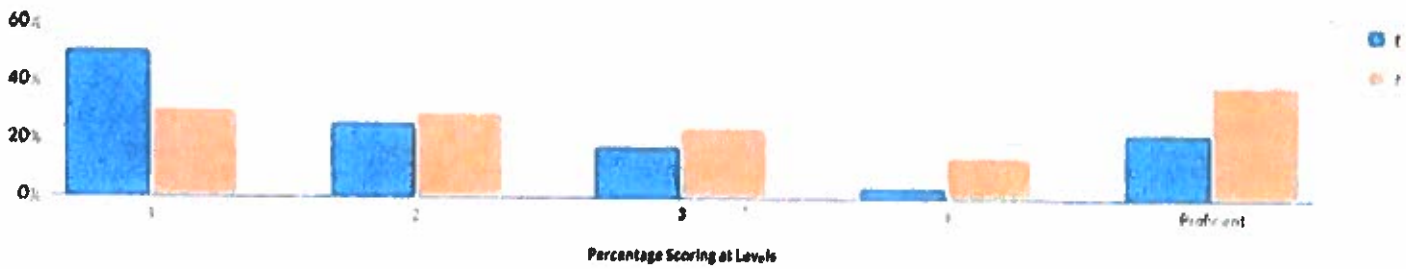


Percentage Scoring at Lev. N

MEAN SCORE: 591

Subgroup	Not Tested	Tested	Level 1		Level 2		Level 3		Level 4		Proficient (Levels 3 & 4)	
			#	%	#	%	#	%	#	%	#	%
All Students	72	222	86	39%	60	27%	47	21%	29	13%	76	34%
General Education	62	188	55	29%	57	30%	47	25%	29	15%	76	40%
Students with Disabilities	10	34	31	91%	3	9%	0	0%	0	0%	0	0%
Asian or Native Hawaiian/Other Pacific Islander	0	3	-	-	-	-	-	-	-	-	-	-
Black or African American	5	15	-	-	-	-	-	-	-	-	-	-
Hispanic or Latino	5	16	9	56%	3	19%	2	13%	2	13%	4	25%
White	56	164	55	34%	48	29%	38	23%	23	14%	61	37%
Multiracial	6	24	16	67%	4	17%	2	8%	2	8%	4	17%
Small Group Total	5	18	6	33%	5	28%	5	28%	2	11%	7	39%
Female	35	117	48	41%	30	26%	24	21%	15	13%	39	33%
Male	37	105	38	36%	30	29%	23	22%	14	13%	37	35%
English Language Learners	0	1	-	-	-	-	-	-	-	-	-	-
Non-English Language Learners	72	221	-	-	-	-	-	-	-	-	-	-
Economically Disadvantaged	38	138	68	49%	35	25%	24	17%	11	8%	35	25%
Not Economically Disadvantaged	34	84	18	21%	25	30%	23	27%	18	21%	41	49%
Not Migrant	72	222	86	39%	60	27%	47	21%	29	13%	76	34%
Homeless	0	7	2	29%	4	57%	1	14%	0	0%	1	14%
Not Homeless	72	215	84	39%	56	26%	46	21%	29	13%	75	35%
Not in Foster Care	72	222	86	39%	60	27%	47	21%	29	13%	76	34%
Parent Not in Armed Forces	72	222	86	39%	60	27%	47	21%	29	13%	76	34%

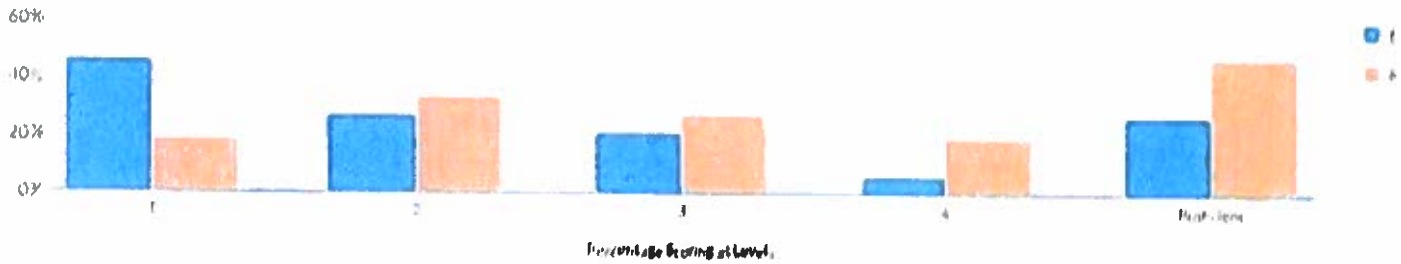
GRADE 7 ELA RESULTS



MEAN SCORE: 589

Subgroup	Not Tested	Tested	Level 1		Level 2		Level 3		Level 4		Proficient (Levels 3 & 4)	
			#	%	#	%	#	%	#	%	#	%
All Students	137	201	103	51%	52	26%	37	18%	9	4%	46	23%
General Education	113	175	82	47%	49	28%	35	20%	9	5%	44	25%
Students with Disabilities	24	26	21	81%	3	12%	2	8%	0	0%	2	8%
Asian or Native Hawaiian/Other Pacific Islander	1	4	-	-	-	-	-	-	-	-	-	-
Black or African American	9	7	-	-	-	-	-	-	-	-	-	-
Hispanic or Latino	9	17	11	65%	5	29%	1	6%	0	0%	1	6%
White	103	158	74	47%	45	28%	30	19%	9	6%	39	25%
Multiracial	15	15	10	67%	2	13%	3	20%	0	0%	3	20%
Small Group Total	10	11	8	73%	0	0%	3	27%	0	0%	3	27%
Female	73	93	38	41%	32	34%	16	17%	7	8%	23	25%
Male	64	108	65	60%	20	19%	21	19%	2	2%	23	21%
Non-English Language Learners	136	201	103	51%	52	26%	37	18%	9	4%	46	23%
Economically Disadvantaged	70	120	79	66%	26	22%	12	10%	3	3%	15	13%
Not Economically Disadvantaged	67	81	24	30%	26	32%	25	31%	6	7%	31	38%
Not Migrant	137	201	103	51%	52	26%	37	18%	9	4%	46	23%
Homeless	4	4	-	-	-	-	-	-	-	-	-	-
Not Homeless	133	197	-	-	-	-	-	-	-	-	-	-
Not in Foster Care	137	201	103	51%	52	26%	37	18%	9	4%	46	23%
Parent Not in Armed Forces	137	201	103	51%	52	26%	37	18%	9	4%	46	23%

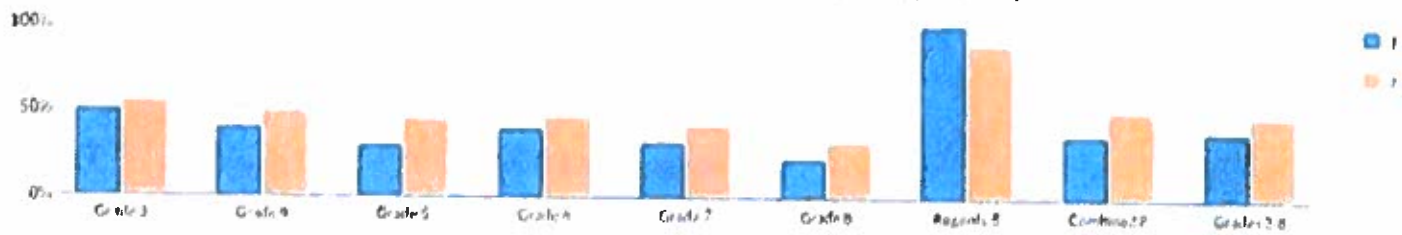
GRADE 8 ELA RESULTS



MEAN SCORE: 585

Subgroup	Not Tested	Tested	Level 1		Level 2		Level 3		Level 4		Proficient (Levels 3 & 4)	
			#	%	#	%	#	%	#	%	#	%
All Students	163	146	67	46%	40	27%	30	21%	9	6%	39	27%
General Education	139	123	51	41%	34	28%	29	24%	9	7%	38	31%
Students with Disabilities	24	23	16	70%	6	26%	1	4%	0	0%	1	4%
Asian or Native Hawaiian/Other Pacific Islander	1	2	-	-	-	-	-	-	-	-	-	-
Black or African American	11	14	9	64%	4	29%	1	7%	0	0%	1	7%
Hispanic or Latino	7	4	-	-	-	-	-	-	-	-	-	-
White	133	112	47	42%	31	28%	26	23%	8	7%	34	30%
Multiracial	11	14	8	57%	5	36%	0	0%	1	7%	1	7%
Small Group Total	8	6	3	50%	0	0%	3	50%	0	0%	3	50%
Female	81	60	24	40%	14	23%	17	28%	5	8%	22	37%
Male	82	86	43	50%	26	30%	13	16%	4	5%	17	20%
Non-English Language Learners	163	146	67	46%	40	27%	30	21%	9	6%	39	27%
Economically Disadvantaged	85	85	50	59%	23	27%	11	13%	1	1%	12	14%
Not Economically Disadvantaged	78	61	17	28%	17	28%	19	31%	8	13%	27	44%
Not Migrant	163	146	67	46%	40	27%	30	21%	9	6%	39	27%
Not Homeless	160	146	67	46%	40	27%	30	21%	9	6%	39	27%
Not in Foster Care	161	146	67	46%	40	27%	30	21%	9	6%	39	27%
Parent Not in Armed Forces	163	146	67	46%	40	27%	30	21%	9	6%	39	27%

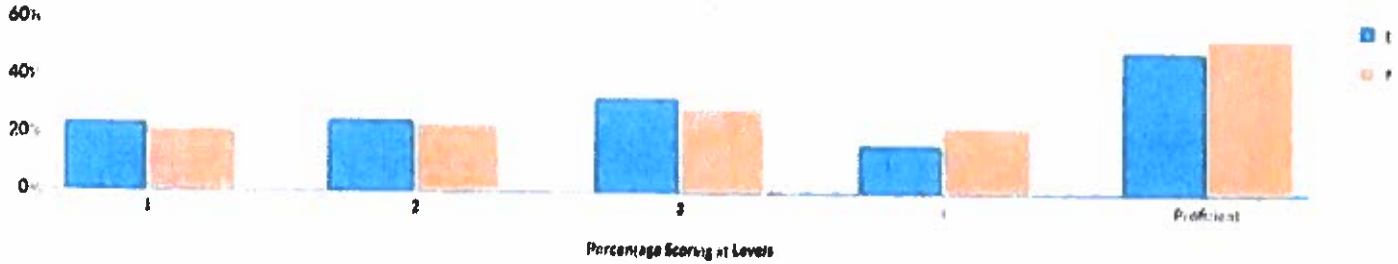
GRADES 3-8 MATHEMATICS SUMMARY RESULTS (2018-19)



Grade	Not Tested	Tested	Level 1		Level 2		Level 3		Level 4 & Above		Proficient (Levels 3 & Above)	
			#	%	#	%	#	%	#	%	#	%
Grade 3	37	315	77	24%	80	25%	104	33%	54	17%	158	50%
Grade 4	60	257	78	30%	77	30%	68	26%	34	13%	102	40%
Grade 5	76	286	139	49%	62	22%	64	22%	21	7%	85	30%
Grade 6	94	200	69	35%	51	26%	49	25%	31	16%	80	40%
Grade 7	163	174	82	47%	36	21%	37	21%	19	11%	56	32%
Grade 8	205	104	52	50%	28	27%	20	19%	4	4%	24	23%
Regents 8	-	23	0	0%	0	0%	0	0%	23	100%	23	100%
Combined 8	205	127	52	41%	28	22%	20	16%	27	21%	47	37%
Grades 3-8	635	1,359	497	37%	334	25%	342	25%	186	14%	528	39%

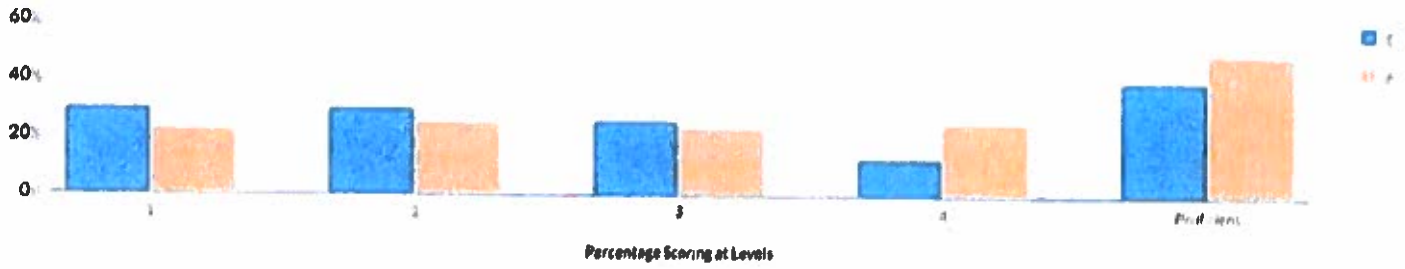
Advanced grade 7 and 8 students who take a Regents math test in lieu of the grade 7 and/or 8 math test are reported in the Regents 7 and Regents 8 rows. Combined 7 and Combined 8 are students who took either the grade 7 or 8 math test or a Regents math test in lieu of the grade 7 or 8 math test.

GRADE 3 MATH RESULTS



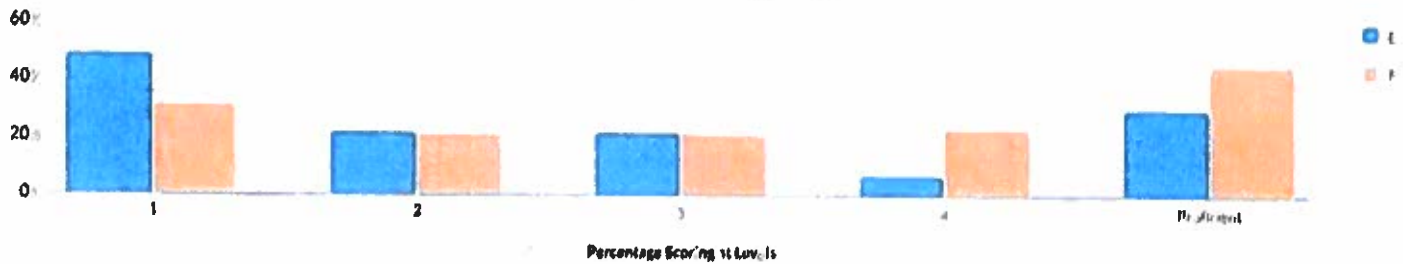
MEAN SCORE: 598

Subgroup	Not Tested	Tested	Level 1		Level 2		Level 3		Level 4		Proficient (Levels 3 & 4)	
			#	%	#	%	#	%	#	%	#	%
All Students	37	315	77	24%	80	25%	104	33%	54	17%	158	50%
General Education	29	269	53	20%	68	25%	96	36%	52	19%	148	55%
Students with Disabilities	8	46	24	52%	12	26%	8	17%	2	4%	10	22%
Asian or Native Hawaiian/Other Pacific Islander	0	2	-	-	-	-	-	-	-	-	-	-
Black or African American	0	17	6	35%	6	35%	5	29%	0	0%	5	29%
Hispanic or Latino	0	15	-	-	-	-	-	-	-	-	-	-
White	36	239	53	22%	57	24%	83	35%	46	19%	129	54%
Multiracial	1	42	14	33%	10	24%	13	31%	5	12%	18	43%
Small Group Total	0	17	4	24%	7	41%	3	18%	3	18%	6	35%
Female	20	148	35	24%	40	27%	51	34%	22	15%	73	49%
Male	17	167	42	25%	40	24%	53	32%	32	19%	85	51%
English Language Learners	0	1	-	-	-	-	-	-	-	-	-	-
Non-English Language Learners	37	314	-	-	-	-	-	-	-	-	-	-
Economically Disadvantaged	20	201	64	32%	53	26%	64	32%	20	10%	84	42%
Not Economically Disadvantaged	17	114	13	11%	27	24%	40	35%	34	30%	74	65%
Not Migrant	37	315	77	24%	80	25%	104	33%	54	17%	158	50%
Homeless	1	9	3	33%	1	11%	4	44%	1	11%	5	56%
Not Homeless	36	306	74	24%	79	26%	100	33%	53	17%	153	50%
In Foster Care	0	2	-	-	-	-	-	-	-	-	-	-
Not in Foster Care	37	313	-	-	-	-	-	-	-	-	-	-
Parent Not in Armed Forces	37	315	77	24%	80	25%	104	33%	54	17%	158	50%

GRADE 4 MATH RESULTS**MEAN SCORE: 595**

Subgroup	Not Tested	Tested	Level 1		Level 2		Level 3		Level 4		Proficient (Levels 3 & 4)	
			#	%	#	%	#	%	#	%	#	%
All Students	60	257	78	30%	77	30%	68	26%	34	13%	102	40%
General Education	43	227	57	25%	69	30%	67	30%	34	15%	101	44%
Students with Disabilities	17	30	21	70%	8	27%	1	3%	0	0%	1	3%
Black or African American	3	14	5	36%	6	43%	2	14%	1	7%	3	21%
Hispanic or Latino	1	16	4	25%	8	50%	3	19%	1	6%	4	25%
White	50	196	58	30%	54	28%	56	29%	28	14%	84	43%
Multiracial	5	31	11	35%	9	29%	7	23%	4	13%	11	35%
Female	27	125	41	33%	43	34%	27	22%	14	11%	41	33%
Male	33	132	37	28%	34	26%	41	31%	20	15%	61	46%
English Language Learners	1	2	-	-	-	-	-	-	-	-	-	-
Non-English Language Learners	59	255	-	-	-	-	-	-	-	-	-	-
Economically Disadvantaged	34	168	66	39%	50	30%	43	26%	9	5%	52	31%
Not Economically Disadvantaged	26	89	12	13%	27	30%	25	28%	25	28%	50	56%
Not Migrant	60	257	78	30%	77	30%	68	26%	34	13%	102	40%
Homeless	1	12	5	42%	4	33%	3	25%	0	0%	3	25%
Not Homeless	59	245	73	30%	73	30%	65	27%	34	14%	99	40%
In Foster Care	0	1	-	-	-	-	-	-	-	-	-	-
Not in Foster Care	60	256	-	-	-	-	-	-	-	-	-	-
Parent Not in Armed Forces	60	257	78	30%	77	30%	68	26%	34	13%	102	40%

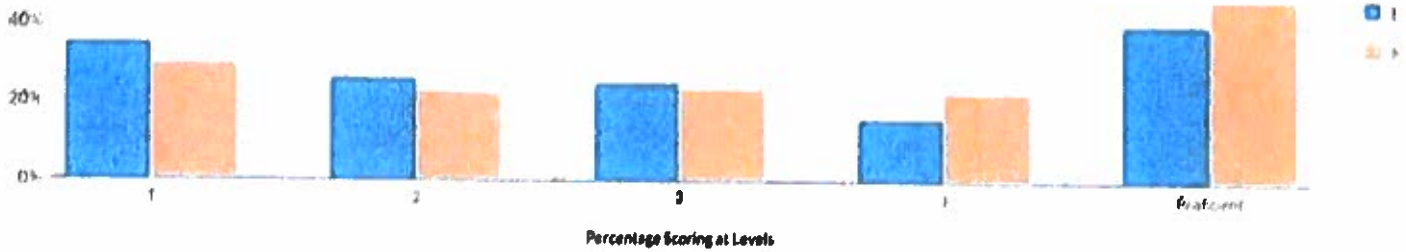
GRADE 5 MATH RESULTS



MEAN SCORE: 593

Subgroup	Not Tested	Tested	Level 1		Level 2		Level 3		Level 4		Proficient (Levels 3 & 4)	
			#	%	#	%	#	%	#	%	#	%
All Students	76	286	139	49%	62	22%	64	22%	21	7%	85	30%
General Education	59	240	100	42%	59	25%	62	26%	19	8%	81	34%
Students with Disabilities	17	46	39	85%	3	7%	2	4%	2	4%	4	9%
Asian or Native Hawaiian/Other Pacific Islander	0	4	-	-	-	-	-	-	-	-	-	-
Black or African American	4	12	-	-	-	-	-	-	-	-	-	-
Hispanic or Latino	2	14	8	57%	5	36%	1	7%	0	0%	1	7%
White	64	225	109	48%	49	22%	53	24%	14	6%	67	30%
Multiracial	6	31	18	58%	4	13%	5	16%	4	13%	9	29%
Small Group Total	4	16	4	25%	4	25%	5	31%	3	19%	8	50%
Female	35	132	59	45%	36	27%	27	20%	10	8%	37	28%
Male	41	154	80	52%	26	17%	37	24%	11	7%	48	31%
Non-English Language Learners	76	286	139	49%	62	22%	64	22%	21	7%	85	30%
Economically Disadvantaged	37	177	99	56%	34	19%	31	18%	13	7%	44	25%
Not Economically Disadvantaged	39	109	40	37%	28	26%	33	30%	8	7%	41	38%
Not Migrant	76	286	139	49%	62	22%	64	22%	21	7%	85	30%
Homeless	3	8	6	75%	1	13%	1	13%	0	0%	1	13%
Not Homeless	73	278	133	48%	61	22%	63	23%	21	8%	84	30%
In Foster Care	0	1	-	-	-	-	-	-	-	-	-	-
Not in Foster Care	76	285	-	-	-	-	-	-	-	-	-	-
Parent Not in Armed Forces	76	286	139	49%	62	22%	64	22%	21	7%	85	30%

GRADE 6 MATH RESULTS



MEAN SCORE: 596

Subgroup	Not Tested	Tested	Level 1		Level 2		Level 3		Level 4		Proficient (Levels 3 & 4)	
			#	%	#	%	#	%	#	%	#	%
All Students	94	200	69	35%	51	26%	49	25%	31	16%	80	40%
General Education	79	171	43	25%	50	29%	47	27%	31	18%	78	46%
Students with Disabilities	15	29	26	90%	1	3%	2	7%	0	0%	2	7%
Asian or Native Hawaiian/Other Pacific Islander	0	3	-	-	-	-	-	-	-	-	-	-
Black or African American	5	15	6	40%	5	33%	3	20%	1	7%	4	27%
Hispanic or Latino	8	13	-	-	-	-	-	-	-	-	-	-
White	72	148	49	33%	36	24%	38	26%	25	17%	63	43%
Multiracial	9	21	11	52%	6	29%	3	14%	1	5%	4	19%
Small Group Total	8	16	3	19%	4	25%	5	31%	4	25%	9	56%
Female	54	98	38	39%	26	27%	21	21%	13	13%	34	35%
Male	40	102	31	30%	25	25%	28	27%	18	18%	46	45%
English Language Learners	0	1	-	-	-	-	-	-	-	-	-	-
Non-English Language Learners	94	199	-	-	-	-	-	-	-	-	-	-
Economically Disadvantaged	54	122	55	45%	35	29%	20	16%	12	10%	32	26%
Not Economically Disadvantaged	40	78	14	18%	16	21%	29	37%	19	24%	48	62%
Not Migrant	94	200	69	35%	51	26%	49	25%	31	16%	80	40%
Homeless	1	6	1	17%	2	33%	2	33%	1	17%	3	50%
Not Homeless	93	194	68	35%	49	25%	47	24%	30	15%	77	40%
Not in Foster Care	94	200	69	35%	51	26%	49	25%	31	16%	80	40%
Parent Not in Armed Forces	94	200	69	35%	51	26%	49	25%	31	16%	80	40%

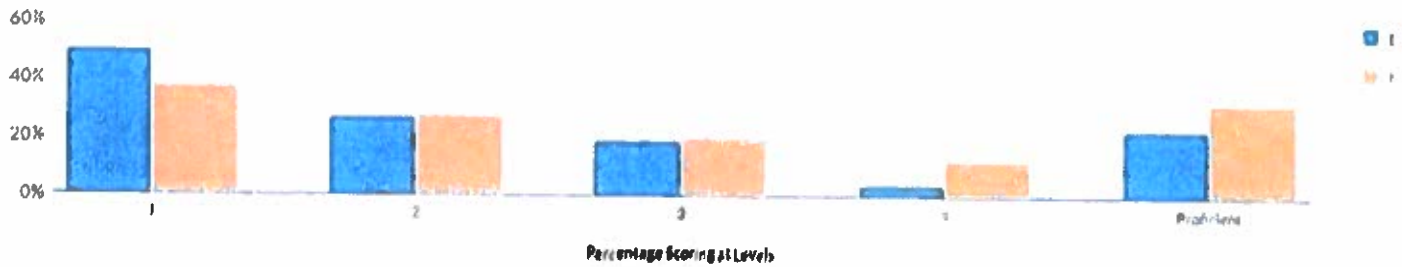
GRADE 7 MATH RESULTS



MEAN SCORE: 593

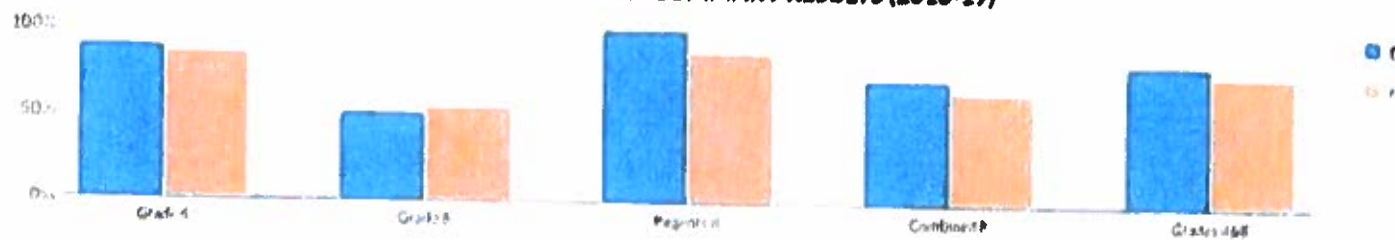
Subgroup	Not Tested	Tested	Level 1		Level 2		Level 3		Level 4		Proficient (Levels 3 & 4)	
			#	%	#	%	#	%	#	%	#	%
All Students	163	174	82	47%	36	21%	37	21%	19	11%	56	32%
General Education	140	147	59	40%	34	23%	35	24%	19	13%	54	37%
Students with Disabilities	23	27	23	85%	2	7%	2	7%	0	0%	2	7%
Asian or Native Hawaiian/Other Pacific Islander	1	4	-	-	-	-	-	-	-	-	-	-
Black or African American	10	6	-	-	-	-	-	-	-	-	-	-
Hispanic or Latino	10	16	11	69%	4	25%	1	6%	0	0%	1	6%
White	125	135	60	44%	29	21%	30	22%	16	12%	46	34%
Multiracial	17	13	5	38%	3	23%	4	31%	1	8%	5	38%
Small Group Total	11	10	6	60%	0	0%	2	20%	2	20%	4	40%
Female	89	76	34	45%	15	20%	20	26%	7	9%	27	36%
Male	74	98	48	49%	21	21%	17	17%	12	12%	29	30%
Non-English Language Learners	162	174	82	47%	36	21%	37	21%	19	11%	56	32%
Economically Disadvantaged	93	98	67	68%	16	16%	10	10%	5	5%	15	15%
Not Economically Disadvantaged	70	76	15	20%	20	26%	27	36%	14	18%	41	54%
Not Migrant	163	174	82	47%	36	21%	37	21%	19	11%	56	32%
Homeless	7	2	-	-	-	-	-	-	-	-	-	-
Not Homeless	156	172	-	-	-	-	-	-	-	-	-	-
Not in Foster Care	163	174	82	47%	36	21%	37	21%	19	11%	56	32%
Parent Not in Armed Forces	163	174	82	47%	36	21%	37	21%	19	11%	56	32%

GRADE 8 MATH RESULTS



MEAN SCORE: 592

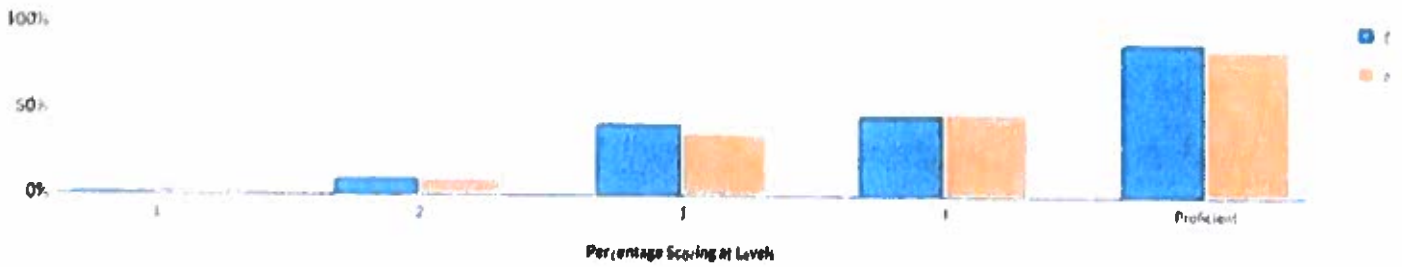
Subgroup	Not Tested	Tested	Level 1		Level 2		Level 3		Level 4		Proficient (Levels 3 & 4)	
			#	%	#	%	#	%	#	%	#	%
All Students	205	104	52	50%	28	27%	20	19%	4	4%	24	23%
General Education	176	86	39	45%	24	28%	19	22%	4	5%	23	27%
Students with Disabilities	29	18	13	72%	4	22%	1	6%	0	0%	1	6%
Asian or Native Hawaiian/Other Pacific Islander	1	2	-	-	-	-	-	-	-	-	-	-
Black or African American	17	8	7	88%	1	13%	0	0%	0	0%	0	0%
Hispanic or Latino	6	5	-	-	-	-	-	-	-	-	-	-
White	165	79	34	43%	24	30%	17	22%	4	5%	21	27%
Multiracial	16	10	7	70%	2	20%	1	10%	0	0%	1	10%
Small Group Total	7	7	4	57%	1	14%	2	29%	0	0%	2	29%
Female	104	37	15	41%	12	32%	7	19%	3	8%	10	27%
Male	101	67	37	55%	16	24%	13	19%	1	1%	14	21%
Non-English Language Learners	205	104	52	50%	28	27%	20	19%	4	4%	24	23%
Economically Disadvantaged	104	67	44	66%	17	25%	5	7%	1	1%	6	9%
Not Economically Disadvantaged	101	37	8	22%	11	30%	15	41%	3	8%	18	49%
Not Migrant	205	104	52	50%	28	27%	20	19%	4	4%	24	23%
Not Homeless	202	104	52	50%	28	27%	20	19%	4	4%	24	23%
Not in Foster Care	203	104	52	50%	28	27%	20	19%	4	4%	24	23%
Parent Not in Armed Forces	205	104	52	50%	28	27%	20	19%	4	4%	24	23%

GRADES 4 & 8 SCIENCE SUMMARY RESULTS (2018-19)

Grade	Not Tested	Tested	Level 1		Level 2		Level 3		Level 4		Proficient (Levels 3 & 4)	
			#	%	#	%	#	%	#	%	#	%
Grade 4	34	283	5	2%	27	10%	110	42%	133	47%	251	89%
Grade 8	203	106	19	18%	33	31%	49	46%	5	5%	54	51%
Regents 8	-	78	0	0%	0	0%	15	19%	63	81%	78	100%
Combined 8	203	184	19	10%	33	18%	64	35%	68	37%	132	72%
Grades 4&8	237	467	24	5%	60	13%	182	39%	201	43%	383	82%

Advanced grade 8 students who take a Regents science test in lieu of the grade 8 science test are reported in the Regents 8 row.

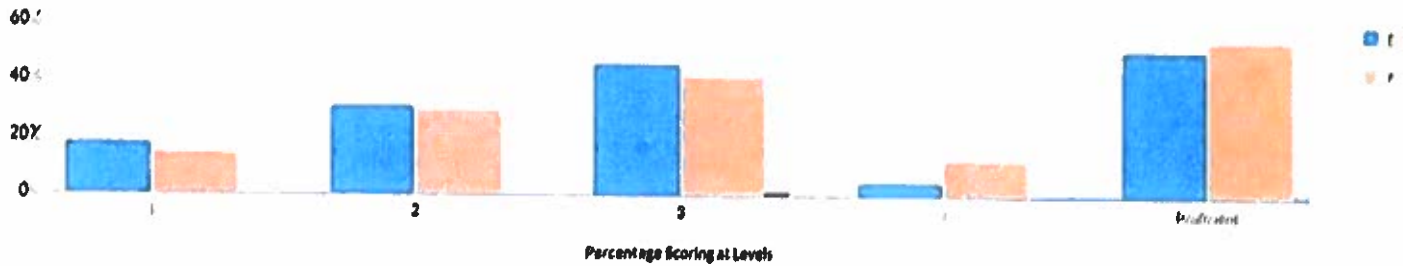
GRADE 4 SCIENCE RESULTS



MEAN SCORE: 81

Subgroup	Not Tested	Tested	Level 1		Level 2		Level 3		Level 4		Proficient (Levels 3 & 4)	
			#	%	#	%	#	%	#	%	#	%
All Students	34	283	5	2%	27	10%	118	42%	133	47%	251	89%
General Education	22	247	3	1%	19	8%	96	39%	129	52%	225	91%
Students with Disabilities	12	36	2	6%	8	22%	22	61%	4	11%	26	72%
Black or African American	2	15	2	13%	1	7%	7	47%	5	33%	12	80%
Hispanic or Latino	1	16	0	0%	1	6%	6	38%	9	56%	15	94%
White	27	220	3	1%	21	10%	89	40%	107	49%	196	89%
Multiracial	4	32	0	0%	4	13%	16	50%	12	38%	28	88%
Female	17	135	2	1%	15	11%	57	42%	61	45%	118	87%
Male	17	148	3	2%	12	8%	61	41%	72	49%	133	90%
English Language Learners	1	2	-	-	-	-	-	-	-	-	-	-
Non-English Language Learners	33	281	-	-	-	-	-	-	-	-	-	-
Economically Disadvantaged	24	178	5	3%	19	11%	89	50%	65	37%	154	87%
Not Economically Disadvantaged	10	105	0	0%	8	8%	29	28%	68	65%	97	92%
Not Migrant	34	283	5	2%	27	10%	118	42%	133	47%	251	89%
Homeless	2	11	0	0%	2	18%	6	55%	3	27%	9	82%
Not Homeless	32	272	5	2%	25	9%	112	41%	130	48%	242	89%
In Foster Care	0	1	-	-	-	-	-	-	-	-	-	-
Not in Foster Care	34	282	-	-	-	-	-	-	-	-	-	-
Parent Not in Armed Forces	34	283	5	2%	27	10%	118	42%	133	47%	251	89%

GRADE 8 SCIENCE RESULTS

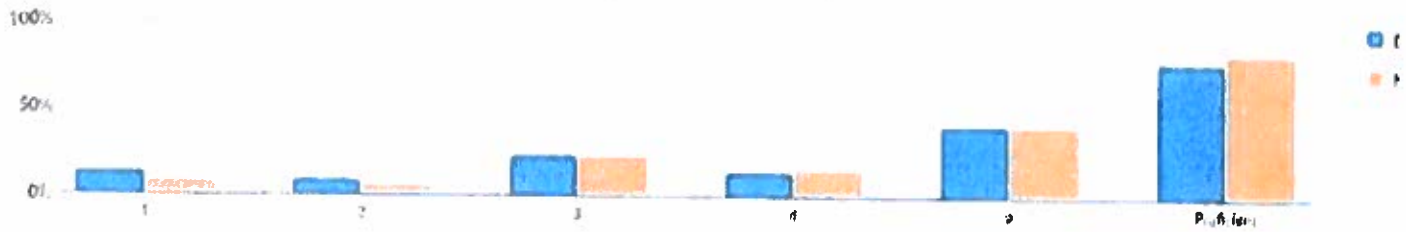


MEAN SCORE: 61

Subgroup	Not Tested	Tested	Level 1		Level 2		Level 3		Level 4		Proficient (Levels 3 & 4)	
			#	%	#	%	#	%	#	%	#	%
All Students	203	106	19	18%	33	31%	49	46%	5	5%	54	51%
General Education	174	89	15	17%	25	28%	44	49%	5	6%	49	55%
Students with Disabilities	29	17	4	24%	8	47%	5	29%	0	0%	5	29%
Asian or Native Hawaiian/Other Pacific Islander	2	1	-	-	-	-	-	-	-	-	-	-
Black or African American	13	12	6	50%	4	33%	2	17%	0	0%	2	17%
Hispanic or Latino	6	5	-	-	-	-	-	-	-	-	-	-
White	165	79	10	13%	21	27%	43	54%	5	6%	48	61%
Multiracial	17	9	2	22%	5	56%	2	22%	0	0%	2	22%
Small Group Total	8	6	1	17%	3	50%	2	33%	0	0%	2	33%
Female	104	38	3	8%	16	42%	18	47%	1	3%	19	50%
Male	99	68	16	24%	17	25%	31	46%	4	6%	35	51%
Non-English Language Learners	203	106	19	18%	33	31%	49	46%	5	5%	54	51%
Economically Disadvantaged	96	74	17	23%	26	35%	28	38%	3	4%	31	42%
Not Economically Disadvantaged	107	32	2	6%	7	22%	21	66%	2	6%	23	72%
Not Migrant	203	106	19	18%	33	31%	49	46%	5	5%	54	51%
Not Homeless	200	106	19	18%	33	31%	49	46%	5	5%	54	51%
Not in Foster Care	201	106	19	18%	33	31%	49	46%	5	5%	54	51%
Parent Not in Armed Forces	203	106	19	18%	33	31%	49	46%	5	5%	54	51%

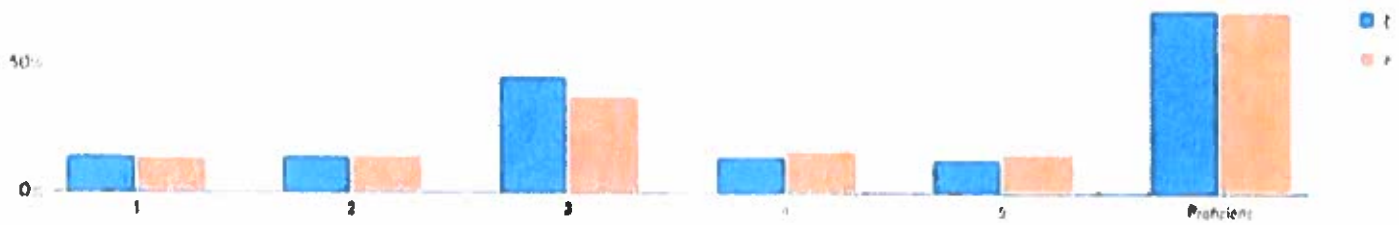
Annual Regents examination results include those from August, January, and June of the reporting year. If a student takes the same Regents examination multiple times during the reporting year, only the highest score is included in these results.

ANNUAL REGENTS EXAMINATION IN ELA (2018-19)



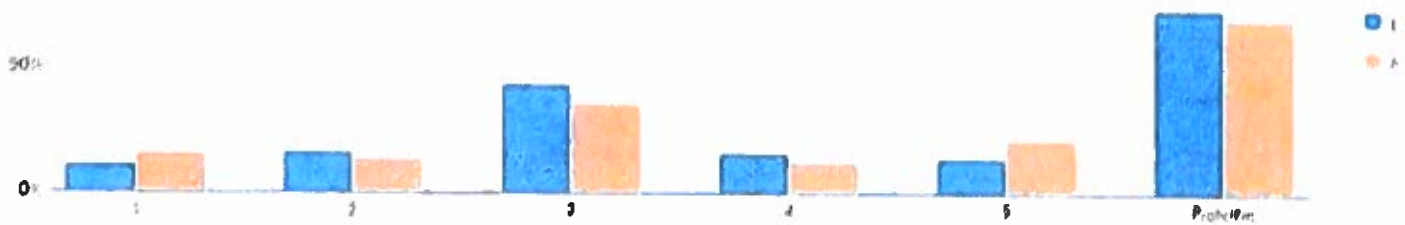
Percentage Scoring at Level														
Subgroup	Tested	Level 1		Level 2		Level 3		Level 4		Level 5		Proficient (Levels 3 & Above)		
		#	%	#	%	#	%	#	%	#	%	#	%	
All Students	325	41	13%	29	9%	75	23%	46	14%	134	41%	255	78%	
General Education	289	24	8%	23	8%	70	24%	39	13%	133	46%	242	84%	
Students with Disabilities	36	17	47%	6	17%	5	14%	7	19%	1	3%	13	36%	
Asian or Native Hawaiian/Other Pacific Islander	1	-	-	-	-	-	-	-	-	-	-	-	-	
Black or African American	34	8	24%	8	24%	10	29%	2	6%	6	18%	18	53%	
Hispanic or Latino	11	-	-	-	-	-	-	-	-	-	-	-	-	
White	256	25	10%	18	7%	61	24%	36	14%	116	45%	213	83%	
Multiracial	23	5	22%	2	9%	3	13%	5	22%	8	35%	16	70%	
Small Group Total	12	3	25%	1	8%	1	8%	3	25%	4	33%	8	67%	
Female	154	19	12%	15	10%	29	19%	23	15%	68	44%	120	78%	
Male	171	22	13%	14	8%	46	27%	23	13%	66	39%	135	79%	
Non-English Language Learners	325	41	13%	29	9%	75	23%	46	14%	134	41%	255	78%	
Economically Disadvantaged	145	30	21%	20	14%	36	25%	21	14%	38	26%	95	66%	
Not Economically Disadvantaged	180	11	6%	9	5%	39	22%	25	14%	96	53%	160	89%	
Not Migrant	325	41	13%	29	9%	75	23%	46	14%	134	41%	255	78%	
Homeless	6	1	17%	0	0%	2	33%	1	17%	2	33%	5	83%	
Not Homeless	319	40	13%	29	9%	73	23%	45	14%	132	41%	250	78%	
In Foster Care	2	-	-	-	-	-	-	-	-	-	-	-	-	
Not in Foster Care	323	-	-	-	-	-	-	-	-	-	-	-	-	
Parent Not in Armed Forces	325	41	13%	29	9%	75	23%	46	14%	134	41%	255	78%	

ANNUAL REGENTS EXAMINATION ALGEBRA I (2018-19)



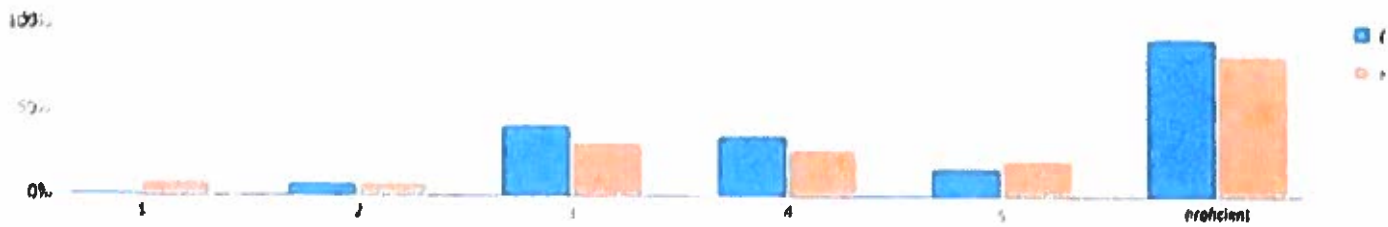
Subgroup	Tested	Level 1		Level 2		Level 3		Level 4		Level 5		Proficient (Levels 3 & Above)	
		#	%	#	%	#	%	#	%	#	%	#	%
All Students	312	44	14%	45	14%	139	45%	45	14%	39	13%	223	71%
General Education	262	17	6%	36	14%	126	48%	44	17%	39	15%	209	80%
Students with Disabilities	50	27	54%	9	18%	13	26%	1	2%	0	0%	14	28%
American Indian or Alaska Native	1	-	-	-	-	-	-	-	-	-	-	-	-
Asian or Native Hawaiian/Other Pacific Islander	2	-	-	-	-	-	-	-	-	-	-	-	-
Black or African American	26	8	31%	7	27%	8	31%	2	8%	1	4%	11	42%
Hispanic or Latino	15	-	-	-	-	-	-	-	-	-	-	-	-
White	246	28	11%	31	13%	115	47%	34	14%	38	15%	187	76%
Multiracial	22	3	14%	5	23%	9	41%	5	23%	0	0%	14	64%
Small Group Total	18	5	28%	2	11%	7	39%	4	22%	0	0%	11	61%
Female	161	19	12%	27	17%	70	43%	27	17%	18	11%	115	71%
Male	151	25	17%	18	12%	69	46%	18	12%	21	14%	108	72%
English Language Learners	1	-	-	-	-	-	-	-	-	-	-	-	-
Non-English Language Learners	311	-	-	-	-	-	-	-	-	-	-	-	-
Economically Disadvantaged	150	36	24%	28	19%	63	42%	16	11%	7	5%	86	57%
Not Economically Disadvantaged	162	8	5%	17	10%	76	47%	29	18%	32	20%	137	85%
Not Migrant	312	44	14%	45	14%	139	45%	45	14%	39	13%	223	71%
Homeless	3	-	-	-	-	-	-	-	-	-	-	-	-
Not Homeless	309	-	-	-	-	-	-	-	-	-	-	-	-
Not In Foster Care	312	44	14%	45	14%	139	45%	45	14%	39	13%	223	71%
Parent Not in Armed Forces	312	44	14%	45	14%	139	45%	45	14%	39	13%	223	71%

ANNUAL REGENTS EXAMINATION GEOMETRY (2018-19)



Subgroup	Tested	Percentage Scoring at Levels											
		Level 1		Level 2		Level 3		Level 4		Level 5		Proficient (Levels 3 & Above)	
		#	%	#	%	#	%	#	%	#	%	#	%
All Students	198	21	11%	32	16%	86	43%	32	16%	27	14%	145	73%
General Education	196	-	-	-	-	-	-	-	-	-	-	-	-
Students with Disabilities	2	-	-	-	-	-	-	-	-	-	-	-	-
Asian or Native Hawaiian/Other Pacific Islander	1	-	-	-	-	-	-	-	-	-	-	-	-
Black or African American	6	1	17%	3	50%	2	33%	0	0%	0	0%	2	33%
Hispanic or Latino	4	-	-	-	-	-	-	-	-	-	-	-	-
White	176	16	9%	26	15%	81	46%	31	18%	22	13%	134	76%
Multiracial	11	4	36%	3	27%	1	9%	1	9%	2	18%	4	36%
Small Group Total	5	0	0%	0	0%	2	40%	0	0%	3	60%	5	100%
Female	105	11	10%	18	17%	47	45%	17	16%	12	11%	76	72%
Male	93	10	11%	14	15%	39	42%	15	16%	15	16%	69	74%
Non-English Language Learners	198	21	11%	32	16%	86	43%	32	16%	27	14%	145	73%
Economically Disadvantaged	61	10	16%	18	30%	25	41%	5	8%	3	5%	33	54%
Not Economically Disadvantaged	137	11	8%	14	10%	61	45%	27	20%	24	18%	112	82%
Not Migrant	198	21	11%	32	16%	86	43%	32	16%	27	14%	145	73%
Homeless	2	-	-	-	-	-	-	-	-	-	-	-	-
Not Homeless	196	-	-	-	-	-	-	-	-	-	-	-	-
Not in Foster Care	198	21	11%	32	16%	86	43%	32	16%	27	14%	145	73%
Parent Not in Armed Forces	198	21	11%	32	16%	86	43%	32	16%	27	14%	145	73%

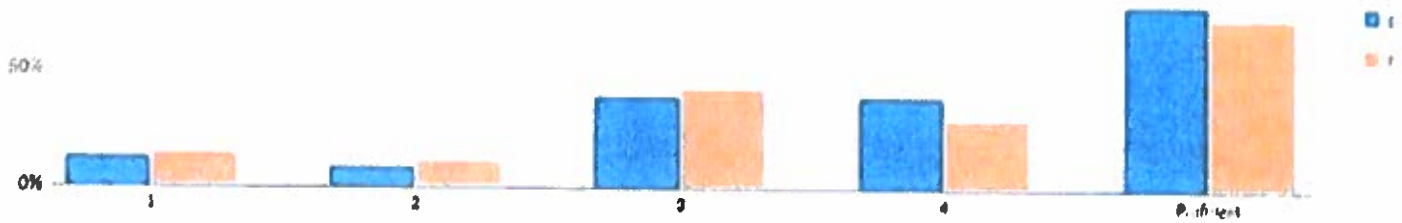
ANNUAL REGENTS EXAMINATION ALGEBRA II (2018-19)



Percentage Scoring at Levels

Subgroup	Tested	Level 1		Level 2		Level 3		Level 4		Level 5		Proficient (Levels 3 & Above)	
		#	%	#	%	#	%	#	%	#	%	#	%
All Students	130	1	1%	9	7%	53	41%	46	35%	21	16%	120	92%
General Education	129	-	-	-	-	-	-	-	-	-	-	-	-
Students with Disabilities	1	-	-	-	-	-	-	-	-	-	-	-	-
Asian or Native Hawaiian/Other Pacific Islander	2	-	-	-	-	-	-	-	-	-	-	-	-
Black or African American	2	-	-	-	-	-	-	-	-	-	-	-	-
Hispanic or Latino	2	-	-	-	-	-	-	-	-	-	-	-	-
White	118	0	0%	8	7%	48	41%	42	36%	20	17%	110	93%
Multiracial	6	1	17%	0	0%	3	50%	2	33%	0	0%	5	83%
Small Group Total	6	0	0%	1	17%	2	33%	2	33%	1	17%	5	83%
Female	81	0	0%	2	2%	38	47%	26	32%	15	19%	79	98%
Male	49	1	2%	7	14%	15	31%	20	41%	6	12%	41	84%
Non-English Language Learners	130	1	1%	9	7%	53	41%	46	35%	21	16%	120	92%
Economically Disadvantaged	31	1	3%	2	6%	12	39%	16	52%	0	0%	28	90%
Not Economically Disadvantaged	99	0	0%	7	7%	41	41%	30	30%	21	21%	92	93%
Not Migrant	130	1	1%	9	7%	53	41%	46	35%	21	16%	120	92%
Not Homeless	130	1	1%	9	7%	53	41%	46	35%	21	16%	120	92%
Not in Foster Care	130	1	1%	9	7%	53	41%	46	35%	21	16%	120	92%
Parent Not in Armed Forces	130	1	1%	9	7%	53	41%	46	35%	21	16%	120	92%

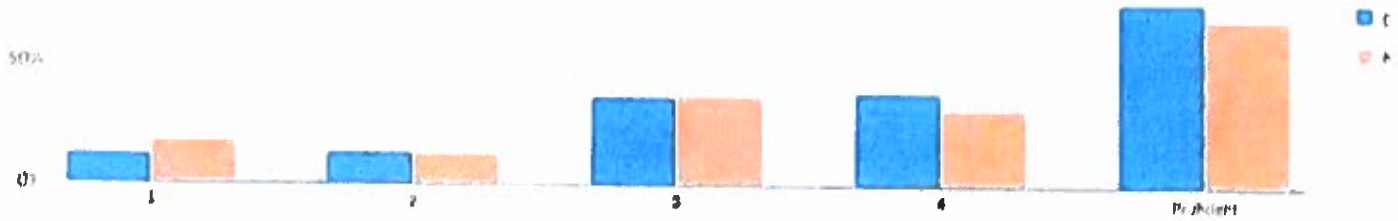
ANNUAL REGENTS EXAMINATION LIVING ENVIRONMENT (2018-19)



Percentage Scoring at Levels

Subgroup	Tested	Level 1		Level 2		Level 3		Level 4		Proficient (Levels 3 & 4)	
		#	%	#	%	#	%	#	%	#	%
All Students	303	40	13%	27	9%	118	39%	118	39%	236	78%
General Education	261	19	7%	20	8%	105	40%	117	45%	222	85%
Students with Disabilities	42	21	50%	7	17%	13	31%	1	2%	14	33%
American Indian or Alaska Native	1	-	-	-	-	-	-	-	-	-	-
Asian or Native Hawaiian/Other Pacific Islander	1	-	-	-	-	-	-	-	-	-	-
Black or African American	24	10	42%	0	0%	11	46%	3	13%	14	58%
Hispanic or Latino	18	-	-	-	-	-	-	-	-	-	-
White	225	24	11%	17	8%	83	37%	101	45%	184	82%
Multiracial	34	4	12%	7	21%	15	44%	8	24%	23	68%
Small Group Total	20	2	10%	3	15%	9	45%	6	30%	15	75%
Female	161	23	14%	16	10%	63	39%	59	37%	122	76%
Male	142	17	12%	11	8%	55	39%	59	42%	114	80%
English Language Learners	1	-	-	-	-	-	-	-	-	-	-
Non-English Language Learners	302	-	-	-	-	-	-	-	-	-	-
Economically Disadvantaged	161	38	24%	20	12%	67	42%	36	22%	103	64%
Not Economically Disadvantaged	142	2	1%	7	5%	51	36%	82	58%	133	94%
Not Migrant	303	40	13%	27	9%	118	39%	118	39%	236	78%
Homeless	1	-	-	-	-	-	-	-	-	-	-
Not Homeless	302	-	-	-	-	-	-	-	-	-	-
In Foster Care	1	-	-	-	-	-	-	-	-	-	-
Not in Foster Care	302	-	-	-	-	-	-	-	-	-	-
Parent Not in Armed Forces	303	40	13%	27	9%	118	39%	118	39%	236	78%

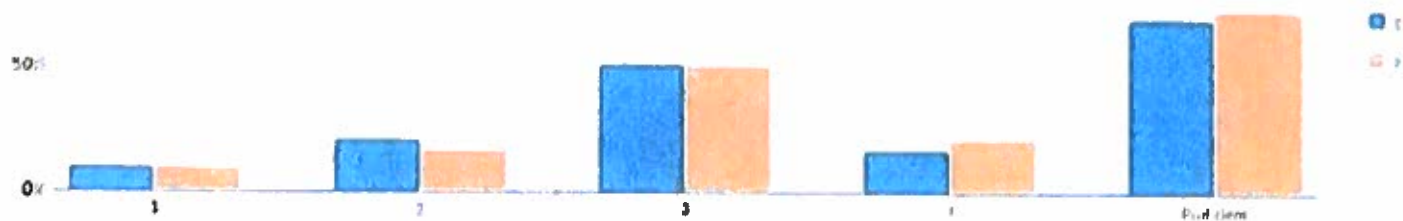
ANNUAL REGENTS EXAMINATION PHYSICAL SETTING/EARTH SCIENCE (2018-19)



Percentage Scoring at Levels

Subgroup	Tested	Level 1		Level 2		Level 3		Level 4		Proficient (Levels 3 & 4)	
		#	%	#	%	#	%	#	%	#	%
All Students	225	28	12%	29	13%	82	36%	86	38%	168	75%
General Education	215	23	11%	28	13%	80	37%	84	39%	164	76%
Students with Disabilities	10	5	50%	1	10%	2	20%	2	20%	4	40%
Asian or Native Hawaiian/Other Pacific Islander	3	-	-	-	-	-	-	-	-	-	-
Black or African American	12	5	42%	3	25%	3	25%	1	8%	4	33%
Hispanic or Latino	6	-	-	-	-	-	-	-	-	-	-
White	189	19	10%	21	11%	69	37%	80	42%	149	79%
Multiracial	15	3	20%	4	27%	6	40%	2	13%	8	53%
Small Group Total	9	1	11%	1	11%	4	44%	3	33%	7	78%
Female	108	10	9%	16	15%	37	34%	45	42%	82	76%
Male	117	18	15%	13	11%	45	38%	41	35%	86	74%
Non-English Language Learners	225	28	12%	29	13%	82	36%	86	38%	168	75%
Economically Disadvantaged	87	17	20%	17	20%	33	38%	20	23%	53	61%
Not Economically Disadvantaged	138	11	8%	12	9%	49	36%	66	48%	115	83%
Not Migrant	225	28	12%	29	13%	82	36%	86	38%	168	75%
Homeless	2	-	-	-	-	-	-	-	-	-	-
Not Homeless	223	-	-	-	-	-	-	-	-	-	-
In Foster Care	1	-	-	-	-	-	-	-	-	-	-
Not In Foster Care	224	-	-	-	-	-	-	-	-	-	-
Parent Not in Armed Forces	225	28	12%	29	13%	82	36%	86	38%	168	75%

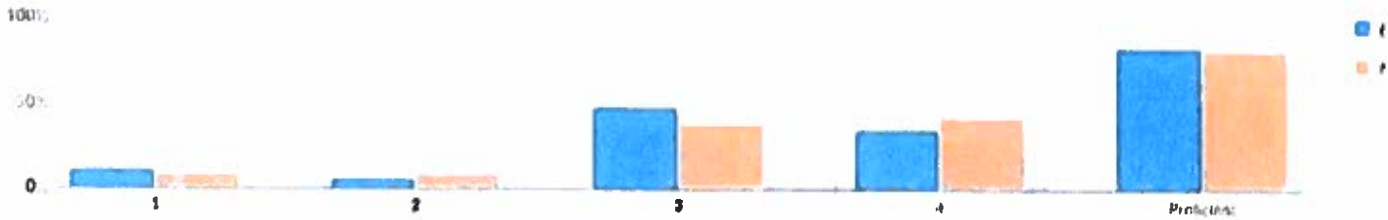
ANNUAL REGENTS EXAMINATION PHYSICAL SETTING/CHEMISTRY (2018-19)



Percentage Scoring at Levels

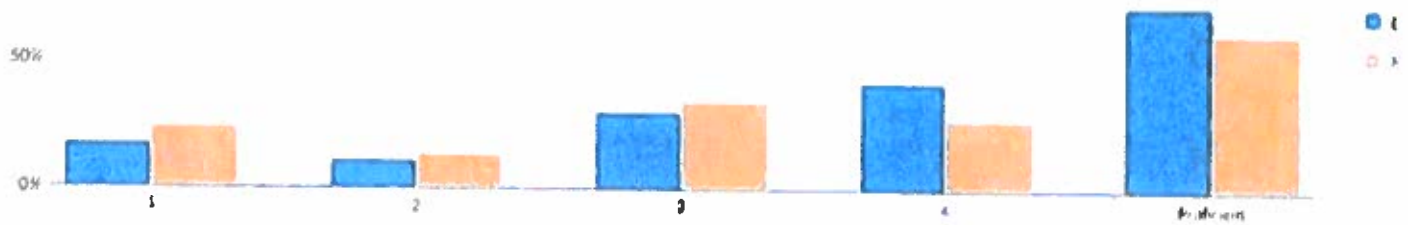
Subgroup	Tested	Level 1		Level 2		Level 3		Level 4		Proficient (Levels 3 & 4)	
		#	%	#	%	#	%	#	%	#	%
All Students	162	17	10%	34	21%	83	51%	28	17%	111	69%
General Education	159	-	-	-	-	-	-	-	-	-	-
Students with Disabilities	3	-	-	-	-	-	-	-	-	-	-
Asian or Native Hawaiian/Other Pacific Islander	1	-	-	-	-	-	-	-	-	-	-
Black or African American	5	-	-	-	-	-	-	-	-	-	-
Hispanic or Latino	2	-	-	-	-	-	-	-	-	-	-
White	148	15	10%	31	21%	76	51%	26	18%	102	69%
Multiracial	6	1	17%	0	0%	4	67%	1	17%	5	83%
Small Group Total	8	1	13%	3	38%	3	38%	1	13%	4	50%
Female	91	11	12%	22	24%	43	47%	15	16%	58	64%
Male	71	6	8%	12	17%	40	56%	13	18%	53	75%
Non-English Language Learners	162	17	10%	34	21%	83	51%	28	17%	111	69%
Economically Disadvantaged	38	4	11%	8	21%	22	58%	4	11%	26	68%
Not Economically Disadvantaged	124	13	10%	26	21%	61	49%	24	19%	85	69%
Not Migrant	162	17	10%	34	21%	83	51%	28	17%	111	69%
Not Homeless	162	17	10%	34	21%	83	51%	28	17%	111	69%
Not in Foster Care	162	17	10%	34	21%	83	51%	28	17%	111	69%
Parent Not in Armed Forces	162	17	10%	34	21%	83	51%	28	17%	111	69%

ANNUAL REGENTS EXAMINATION PHYSICAL SETTING/PHYSICS (2018-19)



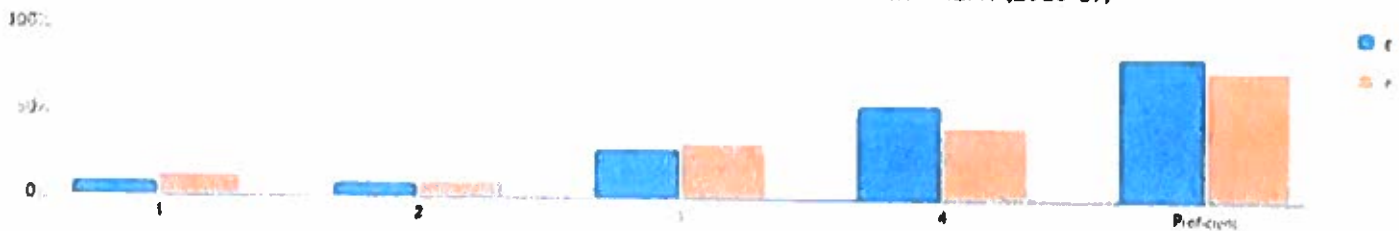
Subgroup	Tested	Percentage Scoring at Levels									
		Level 1		Level 2		Level 3		Level 4		Proficient (Levels 3 & 4)	
		#	%	#	%	#	%	#	%	#	%
All Students	89	10	11%	5	6%	43	48%	31	35%	74	83%
General Education	88	-	-	-	-	-	-	-	-	-	-
Students with Disabilities	1	-	-	-	-	-	-	-	-	-	-
Asian or Native Hawaiian/Other Pacific Islander	2	-	-	-	-	-	-	-	-	-	-
Hispanic or Latino	2	-	-	-	-	-	-	-	-	-	-
White	84	8	10%	5	6%	41	49%	30	36%	71	85%
Multiracial	1	-	-	-	-	-	-	-	-	-	-
Small Group Total	5	2	40%	0	0%	2	40%	1	20%	3	60%
Female	40	5	13%	2	5%	22	55%	11	28%	33	83%
Male	49	5	10%	3	6%	21	43%	20	41%	41	84%
Non-English Language Learners	89	10	11%	5	6%	43	48%	31	35%	74	83%
Economically Disadvantaged	15	3	20%	0	0%	8	53%	4	27%	12	80%
Not Economically Disadvantaged	74	7	9%	5	7%	35	47%	27	36%	62	84%
Not Migrant	89	10	11%	5	6%	43	48%	31	35%	74	83%
Not Homeless	89	10	11%	5	6%	43	48%	31	35%	74	83%
Not in Foster Care	89	10	11%	5	6%	43	48%	31	35%	74	83%
Parent Not in Armed Forces	89	10	11%	5	6%	43	48%	31	35%	74	83%

ANNUAL REGENTS TRANSITIONAL EXAM IN GLOBAL HISTORY & GEOGRAPHY (2018-19)



Subgroup	Tested	Percentage Scoring at Levels									
		Level 1		Level 2		Level 3		Level 4		Proficient (Levels 3 & 4)	
		#	%	#	%	#	%	#	%	#	%
All Students	311	53	17%	33	11%	93	30%	132	42%	225	72%
General Education	260	27	10%	28	11%	80	31%	125	48%	205	79%
Students with Disabilities	51	26	51%	5	10%	13	25%	7	14%	20	39%
Asian or Native Hawaiian/Other Pacific Islander	1	-	-	-	-	-	-	-	-	-	-
Black or African American	20	12	60%	2	10%	5	25%	1	5%	6	30%
Hispanic or Latino	14	-	-	-	-	-	-	-	-	-	-
White	252	32	13%	24	10%	75	30%	121	48%	196	78%
Multiracial	24	4	17%	7	29%	8	33%	5	21%	13	54%
Small Group Total	15	5	33%	0	0%	5	33%	5	33%	10	67%
Female	154	26	17%	17	11%	42	27%	69	45%	111	72%
Male	157	27	17%	16	10%	51	32%	63	40%	114	73%
Non-English Language Learners	311	53	17%	33	11%	93	30%	132	42%	225	72%
Economically Disadvantaged	159	48	30%	24	15%	52	33%	35	22%	87	55%
Not Economically Disadvantaged	152	5	3%	9	6%	41	27%	97	64%	138	91%
Not Migrant	311	53	17%	33	11%	93	30%	132	42%	225	72%
Homeless	3	-	-	-	-	-	-	-	-	-	-
Not Homeless	308	-	-	-	-	-	-	-	-	-	-
In Foster Care	2	-	-	-	-	-	-	-	-	-	-
Not In Foster Care	309	-	-	-	-	-	-	-	-	-	-
Parent Not in Armed Forces	311	53	17%	33	11%	93	30%	132	42%	225	72%

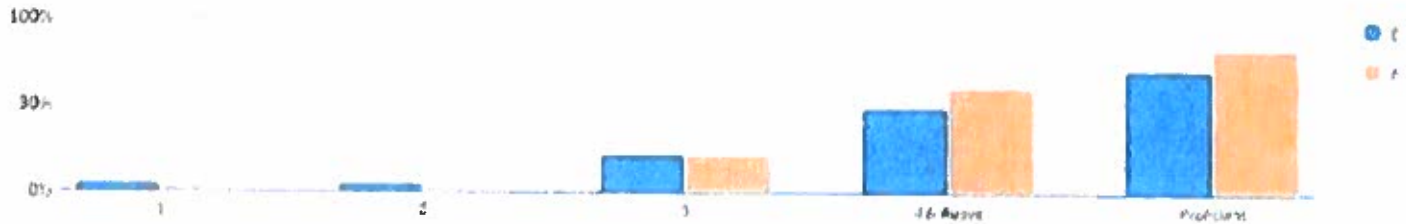
ANNUAL REGENTS EXAMINATION U.S. HISTORY & GOVERNMENT (2018-19)



Subgroup	Tested	Percentage Scoring At Levels									
		Level 1		Level 2		Level 3		Level 4		Proficient (Levels 3 & 4)	
		#	%	#	%	#	%	#	%	#	%
All Students	309	26	8%	24	8%	90	29%	169	55%	259	84%
General Education	268	10	4%	17	6%	78	29%	163	61%	241	90%
Students with Disabilities	41	16	39%	7	17%	12	29%	6	15%	18	44%
Asian or Native Hawaiian/Other Pacific Islander	1	-	-	-	-	-	-	-	-	-	-
Black or African American	25	5	20%	6	24%	8	32%	6	24%	14	56%
Hispanic or Latino	11	-	-	-	-	-	-	-	-	-	-
White	241	15	6%	12	5%	64	27%	180	62%	214	89%
Multiracial	31	5	16%	3	10%	14	45%	9	29%	23	74%
Small Group Total	12	1	8%	3	25%	4	33%	4	33%	8	67%
Female	148	8	5%	13	9%	49	33%	78	53%	127	86%
Male	161	18	11%	11	7%	41	25%	91	57%	132	82%
Non-English Language Learners	309	26	8%	24	8%	90	29%	169	55%	259	84%
Economically Disadvantaged	142	19	13%	19	13%	55	39%	49	35%	104	73%
Not Economically Disadvantaged	167	7	4%	5	3%	35	21%	120	72%	155	93%
Not Migrant	309	26	8%	24	8%	90	29%	169	55%	259	84%
Homeless	6	1	17%	0	0%	4	67%	1	17%	5	83%
Not Homeless	303	25	8%	24	8%	86	28%	168	55%	254	84%
In Foster Care	2	-	-	-	-	-	-	-	-	-	-
Not In Foster Care	307	-	-	-	-	-	-	-	-	-	-
Parent Not In Armed Forces	309	26	8%	24	8%	90	29%	169	55%	259	84%

A High School Cohort consists of all students who first enter grade 9 anywhere or, in the case of ungraded students with disabilities, reach their seventeenth birthday in a particular school year (July 1 - June 30). The "year" used to identify the cohort is the year in which the July 1 - December 31 dates fall. Results are reported four years after these students first enter grade 9.

2015 TOTAL COHORT REGENTS EXAMINATION IN ELA



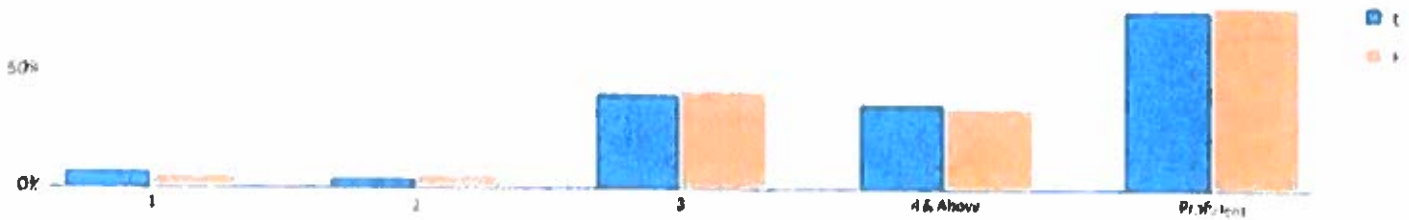
Subgroup	Cohort	Percentage Scoring at Levels													
		Not Tested		Tested		Level 1		Level 2		Level 3		Level 4 & Above		Proficient (Levels 3 & Above)	
		#	%	#	%	#	%	#	%	#	%	#	%	#	%
All Students	327	65	20%	262	80%	15	5%	15	5%	71	22%	161	49%	232	71%
General Education	293	53	18%	240	82%	4	1%	10	3%	69	24%	157	54%	226	77%
Students with Disabilities	34	12	35%	22	65%	11	32%	5	15%	2	6%	4	12%	6	18%
Asian or Native Hawaiian/Other Pacific Islander	4	1	—	3	—	—	—	—	—	—	—	—	—	—	—
Black or African American	38	10	26%	28	74%	2	5%	2	5%	14	37%	10	26%	24	63%
Hispanic or Latino	14	4	29%	10	71%	0	0%	1	7%	2	14%	7	50%	9	64%
White	258	46	18%	212	82%	11	4%	11	4%	51	20%	139	54%	190	74%
Multiracial	13	4	—	9	—	—	—	—	—	—	—	—	—	—	—
Small Group Total	17	5	29%	12	71%	2	12%	1	6%	4	24%	5	29%	9	53%
Female	163	21	13%	142	87%	5	3%	7	4%	33	20%	97	60%	130	80%
Male	164	44	27%	120	73%	10	6%	8	5%	38	23%	64	39%	102	62%
Non-English Language Learners	324	62	—	262	—	—	—	—	—	—	—	—	—	—	—
English Language Learners	3	3	—	0	—	—	—	—	—	—	—	—	—	—	—
Economically Disadvantaged	157	46	29%	111	71%	12	8%	10	6%	36	23%	53	34%	89	57%
Not Economically Disadvantaged	170	19	11%	151	89%	3	2%	5	3%	35	21%	108	64%	143	84%
Migrant	1	1	—	0	—	—	—	—	—	—	—	—	—	—	—
Not Migrant	326	64	—	262	—	—	—	—	—	—	—	—	—	—	—
Homeless	15	5	33%	10	67%	0	0%	0	0%	3	20%	7	47%	10	67%
Not Homeless	312	60	19%	252	81%	15	5%	15	5%	68	22%	154	49%	222	71%
In Foster Care	3	2	—	1	—	—	—	—	—	—	—	—	—	—	—
Not in Foster Care	324	63	—	261	—	—	—	—	—	—	—	—	—	—	—
Parent Not in Armed Forces	327	65	20%	262	80%	15	5%	15	5%	71	22%	161	49%	232	71%

2015 TOTAL COHORT REGENTS EXAMINATIONS IN MATH



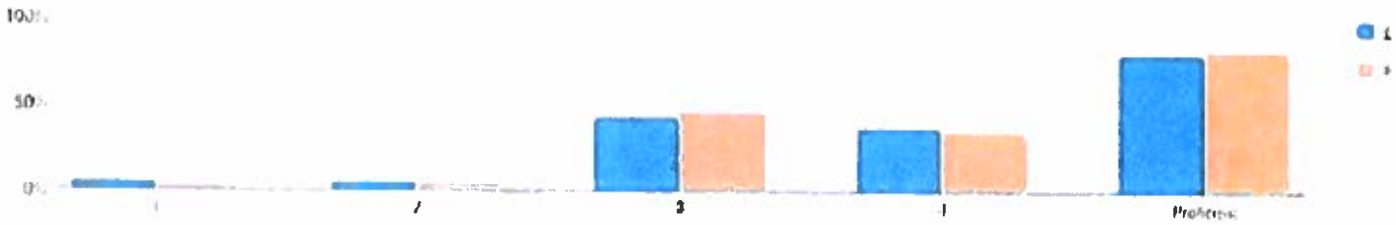
Subgroup	Cohort	Not Tested		Tested		Level 1		Level 2		Level 3		Level 4 & Above		Proficient (Levels 3 & Above)	
		#	%	#	%	#	%	#	%	#	%	#	%	#	%
All Students	327	45	14%	282	86%	13	4%	19	6%	136	42%	114	35%	250	76%
General Education	293	36	12%	257	88%	3	1%	11	4%	129	44%	114	39%	243	83%
Students with Disabilities	34	9	26%	25	74%	10	29%	8	24%	7	21%	0	0%	7	21%
Asian or Native Hawaiian/Other Pacific Islander	4	1	-	3	-	-	-	-	-	-	-	-	-	-	-
Black or African American	38	2	5%	36	95%	2	5%	5	13%	24	63%	5	13%	29	76%
Hispanic or Latino	14	3	21%	11	79%	2	14%	1	7%	5	36%	3	21%	8	57%
White	258	35	14%	223	86%	9	3%	13	5%	99	38%	102	40%	201	78%
Multiracial	13	4	-	9	-	-	-	-	-	-	-	-	-	-	-
Small Group Total	17	5	29%	12	71%	0	0%	0	0%	8	47%	4	24%	12	71%
Female	163	15	9%	148	91%	5	3%	5	3%	70	43%	68	42%	138	85%
Male	164	30	18%	134	82%	8	5%	14	9%	66	40%	46	28%	112	68%
Non-English Language Learners	324	42	-	282	-	-	-	-	-	-	-	-	-	-	-
English Language Learners	3	3	-	0	-	-	-	-	-	-	-	-	-	-	-
Economically Disadvantaged	157	31	20%	126	80%	10	6%	14	9%	74	47%	28	18%	102	65%
Not Economically Disadvantaged	170	14	8%	156	92%	3	2%	5	3%	62	36%	86	51%	148	87%
Migrant	1	1	-	0	-	-	-	-	-	-	-	-	-	-	-
Not Migrant	326	44	-	282	-	-	-	-	-	-	-	-	-	-	-
Homeless	15	2	13%	13	87%	2	13%	1	7%	8	53%	2	13%	10	67%
Not Homeless	312	43	14%	269	86%	11	4%	18	6%	128	41%	112	36%	240	77%
In Foster Care	3	0	-	3	-	-	-	-	-	-	-	-	-	-	-
Not in Foster Care	324	45	-	279	-	-	-	-	-	-	-	-	-	-	-
Parent Not in Armed Forces	327	45	14%	282	86%	13	4%	19	6%	136	42%	114	35%	250	76%

2015 TOTAL COHORT REGENTS EXAMINATIONS IN GLOBAL HISTORY & GEOGRAPHY



Subgroup	Cohort	Percentage Scoring at Levels													
		Not Tested		Tested		Level 1		Level 2		Level 3		Level 4 & Above		Proficient (Levels 3 & Above)	
		#	%	#	%	#	%	#	%	#	%	#	%	#	%
All Students	327	41	13%	286	87%	24	7%	12	4%	132	40%	118	36%	250	76%
General Education	293	32	11%	261	89%	12	4%	9	3%	126	43%	114	39%	240	82%
Students with Disabilities	34	9	26%	25	74%	12	35%	3	9%	6	18%	4	12%	10	29%
Asian or Native Hawaiian/Other Pacific Islander	4	1	—	3	—	—	—	—	—	—	—	—	—	—	—
Black or African American	38	3	8%	35	92%	6	16%	4	11%	19	50%	6	16%	25	66%
Hispanic or Latino	14	4	29%	10	71%	2	14%	1	7%	3	21%	4	29%	7	50%
White	258	30	12%	228	88%	15	6%	6	2%	103	40%	104	40%	207	80%
Multiracial	13	3	—	10	—	—	—	—	—	—	—	—	—	—	—
Small Group Total	17	4	24%	13	76%	1	6%	1	6%	7	41%	4	24%	11	65%
Female	163	13	8%	150	92%	8	5%	5	3%	69	42%	68	42%	137	84%
Male	164	28	17%	136	83%	16	10%	7	4%	63	38%	50	30%	113	69%
Non-English Language Learners	324	39	—	285	—	—	—	—	—	—	—	—	—	—	—
English Language Learners	3	2	—	1	—	—	—	—	—	—	—	—	—	—	—
Economically Disadvantaged	157	31	20%	126	80%	18	11%	8	5%	67	43%	33	21%	100	64%
Not Economically Disadvantaged	170	10	6%	160	94%	6	4%	4	2%	65	38%	85	50%	150	88%
Migrant	1	1	—	0	—	—	—	—	—	—	—	—	—	—	—
Not Migrant	326	40	—	286	—	—	—	—	—	—	—	—	—	—	—
Homeless	15	3	20%	12	80%	1	7%	0	0%	7	47%	4	27%	11	73%
Not Homeless	312	38	12%	274	88%	23	7%	12	4%	125	40%	114	37%	239	77%
In Foster Care	3	1	—	2	—	—	—	—	—	—	—	—	—	—	—
Not in Foster Care	324	40	—	284	—	—	—	—	—	—	—	—	—	—	—
Parent Not in Armed Forces	327	41	13%	286	87%	24	7%	12	4%	132	40%	118	36%	250	76%

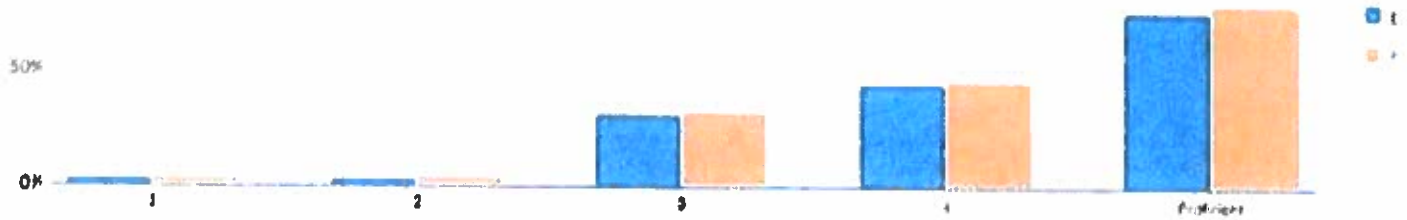
2015 TOTAL COHORT REGENTS EXAMINATIONS IN SCIENCE



Percentage Scoring at Levels

Subgroup	Cohort	Not Tested		Tested		Level 1		Level 2		Level 3		Level 4		Proficient (Levels 3 & 4)	
		#	%	#	%	#	%	#	%	#	%	#	%	#	%
All Students	327	32	10%	295	90%	17	5%	16	5%	142	43%	120	37%	262	80%
General Education	293	24	8%	269	92%	9	3%	9	3%	133	45%	118	40%	251	86%
Students with Disabilities	34	8	24%	26	76%	8	24%	7	21%	9	26%	2	6%	11	32%
Asian or Nat.ve Hawaiian/Other Pacific Islander	4	1	-	3	-	-	-	-	-	-	-	-	-	-	-
Black or African American	38	5	13%	33	87%	3	8%	3	8%	21	55%	6	16%	27	71%
Hispanic or Latino	14	3	21%	11	79%	2	14%	1	7%	4	29%	4	29%	8	57%
White	258	20	8%	238	92%	11	4%	11	4%	112	43%	104	40%	216	84%
Multiracial	13	3	-	10	-	-	-	-	-	-	-	-	-	-	-
Small Group Total	17	4	24%	13	76%	1	6%	1	6%	5	29%	6	35%	11	65%
Female	163	10	6%	153	94%	5	3%	4	2%	79	48%	65	40%	144	88%
Male	164	22	13%	142	87%	12	7%	12	7%	63	38%	55	34%	118	72%
Non-English Language Learners	324	30	-	294	-	-	-	-	-	-	-	-	-	-	-
English Language Learners	3	2	-	1	-	-	-	-	-	-	-	-	-	-	-
Economically Disadvantaged	157	25	16%	132	84%	10	6%	14	9%	76	48%	32	20%	108	69%
Not Economically Disadvantaged	170	7	4%	163	96%	7	4%	2	1%	66	39%	88	52%	154	91%
Migrant	1	1	-	0	-	-	-	-	-	-	-	-	-	-	-
Not Migrant	326	31	-	295	-	-	-	-	-	-	-	-	-	-	-
Homeless	15	4	27%	11	73%	0	0%	1	7%	5	33%	5	33%	10	67%
Not Homeless	312	28	9%	284	91%	17	5%	15	5%	137	44%	115	37%	252	81%
In Foster Care	3	1	-	2	-	-	-	-	-	-	-	-	-	-	-
Not In Foster Care	324	31	-	293	-	-	-	-	-	-	-	-	-	-	-
Parent Not in Armed Forces	327	32	10%	295	90%	17	5%	16	5%	142	43%	120	37%	262	80%

2015 TOTAL COHORT REGENTS EXAMINATION IN U.S. HISTORY & GOVERNMENT



Subgroup	Cohort	Percentage Scoring at Levels													
		Not Tested		Tested		Level 1		Level 2		Level 3		Level 4		Proficient (Levels 3 & 4)	
		#	%	#	%	#	%	#	%	#	%	#	%	#	%
All Students	327	61	19%	266	81%	11	3%	11	3%	100	31%	144	44%	244	75%
General Education	293	48	16%	245	84%	5	2%	4	1%	96	33%	140	48%	236	81%
Students with Disabilities	34	13	38%	21	62%	6	18%	7	21%	4	12%	4	12%	8	24%
Asian or Native Hawaiian/Other Pacific Islander	4	1	-	3	-	-	-	-	-	-	-	-	-	-	-
Black or African American	38	9	24%	29	76%	2	5%	4	11%	15	39%	8	21%	23	61%
Hispanic or Latino	14	4	29%	10	71%	0	0%	2	14%	3	21%	5	36%	8	57%
White	258	43	17%	215	83%	9	3%	4	2%	76	29%	126	49%	202	78%
Multiracial	13	4	-	9	-	-	-	-	-	-	-	-	-	-	-
Small Group Total	17	5	29%	12	71%	0	0%	1	6%	6	33%	5	29%	11	65%
Female	163	21	13%	142	87%	3	2%	4	2%	53	33%	82	50%	135	83%
Male	164	40	24%	124	76%	8	5%	7	4%	47	29%	62	38%	109	66%
Non-English Language Learners	324	58	-	266	-	-	-	-	-	-	-	-	-	-	-
English Language Learners	3	3	-	0	-	-	-	-	-	-	-	-	-	-	-
Economically Disadvantaged	157	43	27%	114	73%	8	5%	9	6%	53	34%	44	28%	97	62%
Not Economically Disadvantaged	170	18	11%	152	89%	3	2%	2	1%	47	28%	100	59%	147	86%
Migrant	1	1	-	0	-	-	-	-	-	-	-	-	-	-	-
Not Migrant	326	60	-	266	-	-	-	-	-	-	-	-	-	-	-
Homeless	15	5	33%	10	67%	0	0%	0	0%	4	27%	6	40%	10	67%
Not Homeless	312	56	18%	256	82%	11	4%	11	4%	96	31%	138	44%	234	75%
In Foster Care	3	2	-	1	-	-	-	-	-	-	-	-	-	-	-
Not in Foster Care	324	59	-	265	-	-	-	-	-	-	-	-	-	-	-
Parent Not in Armed Forces	327	61	19%	266	81%	11	3%	11	3%	100	31%	144	44%	244	75%

NEW YORK STATE ENGLISH AS A SECOND LANGUAGE ACHIEVEMENT TEST (2018-19)

New York State English as a Second Language Achievement Tests (NYSESLAT) are administered in grades K through 12 to all English Language Learners (ELLs). ELLs are students who, by reason of foreign birth or ancestry, speak or understand a language other than English and speak or understand little or no English, and require support to become proficient in English and are identified pursuant to Section 154.3 of Commissioner's Regulations.

Grade	Not Tested	Tested	Entering	Emerging	Transitioning	Expanding	Commanding
Kindergarten	0	5	20%	20%	20%	20%	20%
Grade 1	0	1	-	-	-	-	-
Grade 3	0	1	-	-	-	-	-
Grade 4	0	3	-	-	-	-	-
Grade 7	0	1	-	-	-	-	-
Grade 9	0	1	-	-	-	-	-

NEW YORK STATE ALTERNATE ASSESSMENT (2018-19)

New York State Alternate Assessments (NY5AA) are administered to ungraded students with severe cognitive disabilities whose ages are equivalent to graded students in grades 3 through 8 and high school level.

Grade/Subject	Not Tested	Tested	Level 1		Level 2		Level 3		Level 4	
			#	%	#	%	#	%	#	%
Grade 3 ELA	0	3	-	-	-	-	-	-	-	-
Grade 3 Math	0	3	-	-	-	-	-	-	-	-
Grade 4 ELA	0	3	-	-	-	-	-	-	-	-
Grade 4 Math	0	3	-	-	-	-	-	-	-	-
Grade 4 Science	0	3	-	-	-	-	-	-	-	-
Grade 5 ELA	0	5	0	0%	0	0%	3	60%	2	40%
Grade 5 Math	0	5	0	0%	0	0%	5	100%	0	0%
Grade 6 ELA	2	1	-	-	-	-	-	-	-	-
Grade 6 Math	2	1	-	-	-	-	-	-	-	-
Grade 7 ELA	0	4	-	-	-	-	-	-	-	-
Grade 7 Math	0	4	-	-	-	-	-	-	-	-
Grade 8 ELA	2	3	-	-	-	-	-	-	-	-
Grade 8 Math	2	3	-	-	-	-	-	-	-	-
Grade 8 Science	2	3	-	-	-	-	-	-	-	-
Secondary-Level ELA	10	2	-	-	-	-	-	-	-	-
Secondary-Level Math	10	2	-	-	-	-	-	-	-	-

NATIONAL ASSESSMENT OF EDUCATION PROGRESS (NAEP) RESULTS (2018-19)

National Assessment of Education Progress (NAEP) are reported for statewide (New York State) and national results only. District- and school-level results are not reported for NAEP.

NEW YORK STATE NAEP GRADE 4

SUBGROUP	READING				MATH			
	BELOW BASIC	BASIC	PROFICIENT	ADVANCED	BELOW BASIC	BASIC	PROFICIENT	ADVANCED
All Students	34	31	26	8	24	40	29	8
Students with Disabilities	73	18	7	1	61	30	7	2
American Indian or Alaska Native	•	•	•	•	•	•	•	•
Asian	21	27	34	17	8	23	43	26
Native Hawaiian/Other Pacific Islander	•	•	•	•	•	•	•	•
Black or African American	53	31	14	2	43	40	16	1
Hispanic or Latino	45	32	19	4	33	45	19	2
White	24	32	33	11	14	39	38	9
Multiracial	24	23	35	18	15	42	31	12
Limited English Proficient	78	17	4	•	51	40	8	1
Economically Disadvantaged	49	31	17	3	33	43	21	3

NEW YORK STATE NAEP GRADE 8

SUBGROUP	READING				MATH			
	BELOW BASIC	BASIC	PROFICIENT	ADVANCED	BELOW BASIC	BASIC	PROFICIENT	ADVANCED
All Students	30	38	28	4	34	32	22	11
Students with Disabilities	58	31	10	1	72	22	5	2
American Indian or Alaska Native	•	•	•	•	•	•	•	•
Asian	21	33	36	10	15	25	29	31
Native Hawaiian/Other Pacific Islander	•	•	•	•	•	•	•	•
Black or African American	43	38	17	1	55	30	12	3
Hispanic or Latino	41	38	19	2	49	35	14	3
White	20	39	35	6	23	33	29	15
Multiracial	•	•	•	•	•	•	•	•
Limited English Proficient	83	16	1	•	88	10	2	•
Economically Disadvantaged	40	38	20	2	47	32	16	5

NATIONAL NAEP GRADE 4

SUBGROUP	READING				MATH			
	BELOW BASIC	BASIC	PROFICIENT	ADVANCED	BELOW BASIC	BASIC	PROFICIENT	ADVANCED
All Students	35	31	26	9	20	40	32	9
Students with Disabilities	70	18	9	2	51	33	14	3
American Indian or Alaska Native	50	30	17	3	32	43	22	4
Asian	18	25	35	22	7	23	41	29
Native Hawaiian/Other Pacific Islander	45	31	20	4	30	40	24	5
Black or African American	53	30	15	3	35	45	18	2
Hispanic or Latino	46	31	19	4	27	45	24	3
White	24	31	32	12	12	36	40	12
Multiracial	28	32	29	11	17	40	34	10
Limited English Proficient	65	25	8	1	41	43	15	1
Economically Disadvantaged	48	31	18	3	29	45	23	3

NATIONAL NAEP GRADE 8

SUBGROUP	READING				MATH			
	BELOW BASIC	BASIC	PROFICIENT	ADVANCED	BELOW BASIC	BASIC	PROFICIENT	ADVANCED
All Students	28	39	29	4	32	35	23	10
Students with Disabilities	64	27	8	1	68	23	7	2
American Indian or Alaska Native	40	41	19	1	48	37	13	3
Asian	13	30	43	13	12	24	31	33
Native Hawaiian/Other Pacific Islander	38	38	23	2	47	34	15	4
Black or African American	47	39	14	1	54	33	11	2
Hispanic or Latino	38	40	20	1	43	37	16	3
White	19	39	36	5	21	36	30	13
Multiracial	24	40	31	5	28	36	25	11
Limited English Proficient	73	24	3	*	73	22	4	1
Economically Disadvantaged	40	40	18	1	46	36	15	3

*There are not sufficient data for this subgroup.

CIVIL RIGHTS DATA COLLECTION (CRDC) (2015-16)

Civil Right Data Collection (CRDC) data are reported to the United States Department of Education by districts and include data on measures of school quality, climate, and safety as well as enrollment in preschool programs and accelerated coursework to earn postsecondary credit. For more information, visit the CRDC homepage.

CRDC Data (13.06 megabytes)

Glossary of Terms

© COPYRIGHT NEW YORK STATE EDUCATION DEPARTMENT ALL RIGHTS RESERVED.
THIS DOCUMENT WAS CREATED ON: MAY 27, 2020, 11:37 AM EST

FISCAL ACCOUNTABILITY SUMMARY (2018 - 19)

INFORMATION ABOUT EXPENDITURE RATIOS (2017 - 18)

(Data are lagged a year.)

Commissioner's Regulations require that certain expenditure ratios for general-education and special-education students be reported and compared with ratios for similar districts and all public schools. The required ratios for this district are reported below.

The numbers used to compute the statistics on this page were collected on the State Aid Form A, the State Aid Form F, the School District Annual Financial Report (ST-3), and from the Student Information Repository System (SIRS).

THIS SCHOOL DISTRICT

GENERAL EDUCATION

INSTRUCTIONAL EXPENDITURES

\$39,215,982

PUPILS

4,100

EXPENDITURES PER PUPIL

\$9,565

SPECIAL EDUCATION

INSTRUCTIONAL EXPENDITURES

\$18,681,625

PUPILS

622

EXPENDITURES PER PUPIL

\$30,035

SIMILAR DISTRICT GROUP
HIGH NEED/RESOURCE CAPACITY
URBAN OR SUBURBAN

GENERAL EDUCATION

INSTRUCTIONAL EXPENDITURES

\$2,607,418,443

PUPILS

215,052

EXPENDITURES PER PUPIL

\$12,125

SPECIAL EDUCATION

INSTRUCTIONAL EXPENDITURES

\$1,144,010,444

PUPILS

35,167

EXPENDITURES PER PUPIL

\$32,531

ALL SCHOOL DISTRICTS

GENERAL EDUCATION

INSTRUCTIONAL EXPENDITURES

\$35,536,250,285

PUPILS

2,658,466

EXPENDITURES PER PUPIL

\$13,367

SPECIAL EDUCATION

INSTRUCTIONAL EXPENDITURES

\$15,830,085,081

PUPILS

489,198

EXPENDITURES PER PUPIL

\$32,359

Instructional Expenditures for General Education are K-12 expenditures for classroom instruction (excluding Special Education) plus a proration of building level administrative and instructional support expenditures. These expenditures include amounts for instruction of students with disabilities in a general-education setting. District expenditures, such as transportation, debt service and district-wide administration are not included.

The pupil count for General Education is K-12 average daily membership plus K-12 pupils for whom the district pays tuition to another school district. This number represents all pupils, including those classified as having disabilities and those not classified, excluding only students with disabilities placed out of district. Pupils resident in the district but attending a charter school are included. For districts in

which a county jail is located, this number includes incarcerated youth to whom the district must provide an education program.

Instructional Expenditures for Special Education are K-12 expenditures for students with disabilities (including summer special education expenditures) plus a proration of building-level administrative and instructional support expenditures. District expenditures, such as transportation, debt service and district-wide administration are not included.

The pupil count for Special Education is a count of K-12 students with disabilities for the school year plus students for whom the district receives tuition from another district plus students for whom the district pays tuition to another district. Students attending the State schools at Rome and Batavia, private placements and out-of-state placements are included.

Instructional Expenditures Per Pupil is the simple arithmetic ratio of Instructional Expenditures to Pupils. The total cost of instruction for students with disabilities may include both general- and special-education expenditures. Special-education services provided in the general-education classroom may benefit students not classified as having disabilities.

TOTAL EXPENDITURES PER PUPIL

THIS SCHOOL DISTRICT

\$17,746

SIMILAR DISTRICT GROUP

\$22,630

NY STATE

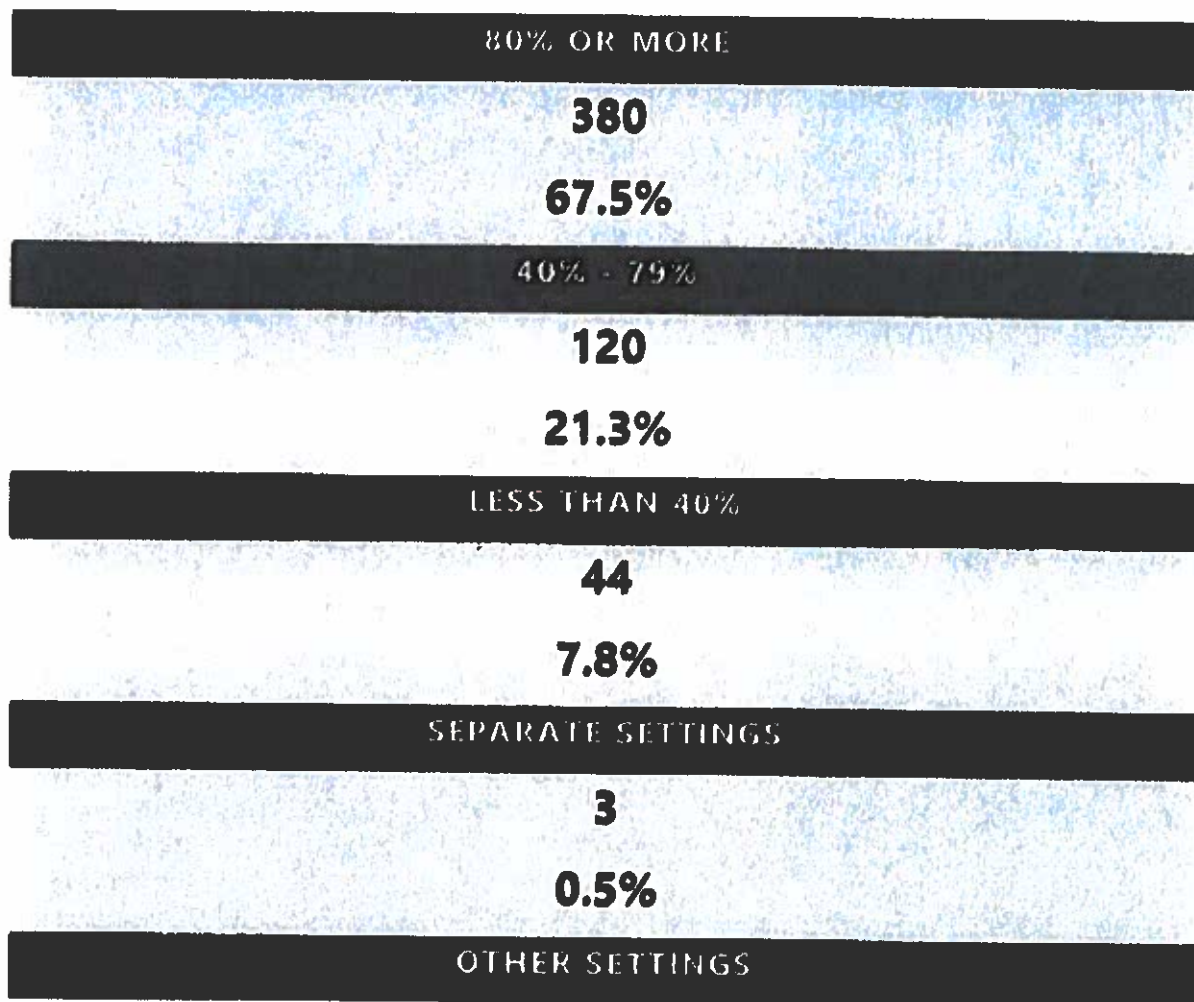
\$25,853

Total Expenditures Per Pupil is the simple arithmetic ratio of Total Expenditures to Pupils. Total Expenditures include district expenditures for classroom instruction, as well as expenditures for transportation, debt service, community service and district-wide administration that are not included in the Instructional Expenditure values for General Education and Special Education. As such, the sum of General Education and Special Education Instructional Expenditures does not equal the Total Expenditures.

INFORMATION ABOUT STUDENTS WITH DISABILITIES (2018 - 19)

Commissioner's Regulations require reporting students with disabilities by the percent of time they are in general education classrooms and the classification rate of students with disabilities. These data are to be compared with percentages for similar districts and all public schools. The required percentages for this district are reported below.

STUDENT PLACEMENT (PERCENT OF TIME INSIDE REGULAR CLASSROOM) THIS SCHOOL DISTRICT



16

2.8%

SIMILAR DISTRICT GROUP

HIGH NEED/RESOURCE CAPACITY URBAN OR SUBURBAN



NY STATE



SEPARATE SETTINGS

5.3%

OTHER SETTINGS

5.6%

The source data for the statistics in this table were reported through the Student Information Repository System (SIRS) and verified in Verification Report 5. The counts are numbers of students reported in the least restrictive environment categories for school-age programs (ages 6-21) on BEDS Day, which is the first Wednesday of the reporting year. The percentages represent the amount of time students with disabilities are in general-education classrooms, regardless of the amount and cost of special-education services they receive. Rounding of percentage values may cause them to sum to a number slightly different from 100%.

SCHOOL-AGE STUDENTS WITH DISABILITIES CLASSIFICATION RATE

THIS SCHOOL DISTRICT

13.4%

SIMILAR DISTRICT GROUP

12.9%

NY STATE

15.6%

This rate is a ratio of the count of school-age students with disabilities (ages 4-21) to the total enrollment of all school-age students in the school district, including students who are parentally placed in nonpublic schools located in the school district. The numerator includes all school-age students for whom a district has Committee on Special Education (CSE) responsibility to ensure the provision of special-education services. The denominator includes all school-age students who reside in the district. In the case of parentally placed students in nonpublic schools, it includes the number of students who attend the nonpublic schools located in the

school district. Source data are drawn from the SIRS and from the Basic Education Data System (BEDS).

Similar District Groups are identified according to the Need-to-Resource-Capacity Index. More information is available on our [NRC capacity categories page](#).

**AUBURN ENLARGED CITY SCHOOL DISTRICT
2020 - 2021 PROPOSED BUDGET
ADMINISTRATIVE COMPENSATION DISCLOSURE
PURSUANT TO EDUCATION LAW, AS AMENDED**

SUPERINTENDENT OF SCHOOLS - Jeffrey A. Pirozzolo

Salary	\$180,891
Benefits (FICA, Teachers Retirement, Health/Dental Insurance, Workers' Compensation)	49,720
Life/Supplemental Insurance, Vehicle Use, Cell phone, Paid Vacation Days	15,405

Total Salary and Benefits	\$246,016

ASSISTANT SUPERINTENDENT - Sarah Cupelli

Salary	\$122,400
Benefits (FICA, Teachers Retirement, Health/Dental Insurance, Workers' Compensation)	41,589
Life Insurance, Paid Vacation Days	5,209

Total Salary and Benefits	\$169,198

ASSISTANT SUPERINTENDENT - Camille Johnson

Salary	\$148,398
Benefits (FICA, Teachers Retirement, Health/Dental Insurance, Workers' Compensation)	45,730
Life/Supplemental Insurance, Paid Vacation Days	7,863

Total Salary and Benefits	\$201,989

ASSISTANT SUPERINTENDENT - Jeffrey Evener

Salary	\$125,488
Benefits (FICA, Teachers Retirement, Health Insurance/Dental, Workers' Compensation)	42,160
Life Insurance, Paid Vacation Days	5,338

Total Salary and Benefits	\$172,986

Chapter 474 of the Laws of 1996 and Education Law section 1608 required that the State Education Department prepare a statewide compilation of the salaries and other personnel costs of certain school administrators and make it available to all interested parties. Listed here are data, provided by school districts, of salaries, employee benefits and other forms of remuneration for superintendents of schools (Type 1), deputy, assistant or associate superintendents (Type 2) the salaries of any other certified school administrators or supervisors (Type 3) who are budgeted to be paid at or above a certain level (\$141,000 for 2020-21). This listing refers to information budgeted in May 2020 and expected to be paid in 2020-21 and applies to a particular position in a school district, not necessarily a particular individual. In order to fully understand the meaning of the data, clarification from individual districts may be necessary.

Equalized Total Assessed Value 2,309,161,621

Wood District - 050100 Auburn

Exemption ID	Exemption Name	Statutory Authority	Number of Exemptions	Total Equalized Value of Exemptions	Percent of Value Exempted
00	NYS - GENERALLY	RPTL 404(1)	22	48,557,962	2.15
00	CO - GENERALLY	RPTL 406(1)	33	41,096,574	1.78
50	CITY - GENERALLY	RPTL 406(1)	145	138,958,300	6.02
40	CITY O/S LIMITS - SEWER OR WAT	RPTL 406(3)	3	2,024,843	0.09
00	TOWN - GENERALLY	RPTL 406(1)	25	4,424,105	0.19
40	VG O/S LIMITS - SEWER OR WATER	RPTL 406(3)	1	75,497	0.00
00	SCHOOL DISTRICT	RPTL 408	12	46,232,500	2.00
50	BOCES	RPTL 408	1	336,000	0.01
70	REGIONAL OTB CORPORATION	RACING L 513	1	710,000	0.03
00	USA - GENERALLY	RPTL 400(1)	2	1,117,400	0.05
20	MUNICIPAL INDUSTRIAL DEV AGENC	RPTL 412-a	56	94,300,444	4.08
60	URBAN REN: OWNER-MUN U R AGENC	GEN MUNY 555 & 560	1	100	0.00
00	RES OF CLERGY - RELIG CORP OWN	RPTL 462	1	73,400	0.00
10	NONPROF CORP - RELIG/CONST PRO	RPTL 420-a	16	5,942,611	0.26
20	NONPROF CORP - EDUC/CONST PRC	RPTL 420-a	3	1,194,637	0.05
00	NONPROF CORP - SPECIFIED USES	RPTL 420-b	126	114,082,900	4.94
00	INC VOLUNTEER FIRE CO OR DEPT	RPTL 464(2)	4	3,169,279	0.14
50	PRIVATELY OWNED CEMETERY LAND	RPTL 446	8	2,279,083	0.10
10	NOT-FOR-PROFIT HOUSING COMPANY	RPTL 422	1	1,400,000	0.06
00	HOSP CORP FOR BENEFIT OF CITY	RPTL 438	7	28,444,100	1.23
50	COLD WAR VETERANS (10%)	RPTL 458-b	1	0	0.00
00	PARAPLEGIC VETS	RPTL 458(3)	1	144,000	0.01
00	CLERGY	RPTL 460	6	9,974	0.00
00	AGRICULTURAL BUILDING	RPTL 483	2	92,715	0.00
20	AGRICULTURAL DISTRICT	AG-MKTS L 305	127	13,725,559	0.59
00	PERSONS AGE 65 OR OVER	RPTL 467	16	1,194,090	0.05
04	PERSONS AGE 65 OR OVER	RPTL 467	167	5,523,280	0.24
06	PERSONS AGE 65 OR OVER	RPTL 467	6	297,620	0.01
134	ENHANCED STAR	RPTL 425	1,771	118,423,079	5.13
154	BASIC STAR 1999-2000	RPTL 425	3,884	116,889,311	5.06
166	HISTORIC PROPERTY	RPTL 444-a	8	436,803	0.02
00	SILOS, MANURE STORAGE TANKS,	RPTL 483-a	1	4,593	0.00
10	HOME IMPROVEMENTS	RPTL 421-f	236	1,391,196	0.06

Equalized Total Assessed Value 2,309,161,621

School District - 050100 Auburn

Exemption #	Exemption Name	Statutory Authority	Number of Exemptions	Total Equalized Value of Exemptions	Percent of Value Exempted
40	Mix-use Properties outside NYC	RPTL S485-a	4	1,509,302	0.07
10	BUSINESS INVESTMENT PROPERTY P	RPTL 485-b	26	2,669,311	0.12
50	LTD PROF HOUSING CO	P H F L 33,556,654-a	1	7,500,000	0.32
60	HOUSING DEVELOPMENT FUND CO	P H F L 577,654-a	2	11,599,900	0.50
70	SOLAR OR WIND ENERGY SYSTEM	RPTL 487	15	115,553	0.01
100	SYSTEM CODE	STATUTORY AUTH NOT DEFINED	1	1,325	0.00
Total Exemptions Exclusive of System Exemptions:					
			6,742	817,148,221	35.39
Total System Exemptions:					
			1	1,325	0.00
			6,743	817,149,546	35.39

Exemptions have been equalized using the Uniform Percentage of Value. The Exempt amounts do not take into consideration, payments in lieu of taxes or other payments in lieu of taxes.

Amount, if any, attributable to payments in lieu of taxes:

\$ 611,472